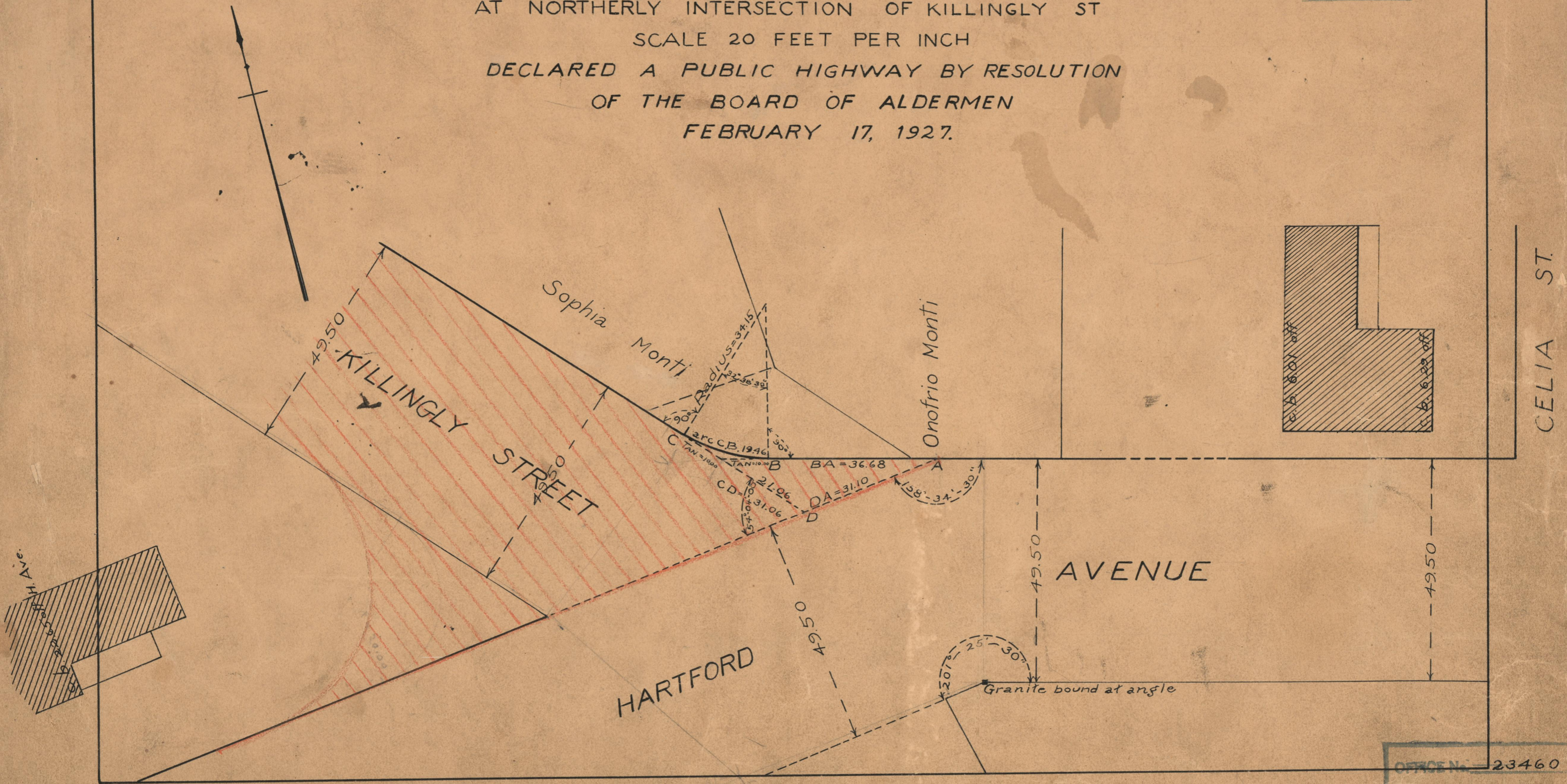


PROVIDENCE, R.I.
CITY ENGINEER'S OFFICE
STREET LINE DEPT.
MAR. 12, 1929.
051467

Note: The area declared a public highway is indicated by the letters ABCDA.

PLAT OF HARTFORD AVENUE

AT NORTHERLY INTERSECTION OF KILLINGLY ST
SCALE 20 FEET PER INCH
DECLARED A PUBLIC HIGHWAY BY RESOLUTION
OF THE BOARD OF ALDERMEN
FEBRUARY 17, 1927.



OFFICE No. 23460
DRAWER 73
SHEET A-78