

PLAT OF
GORTON STREET

FROM COLE AVE. TO SLATER AVE.

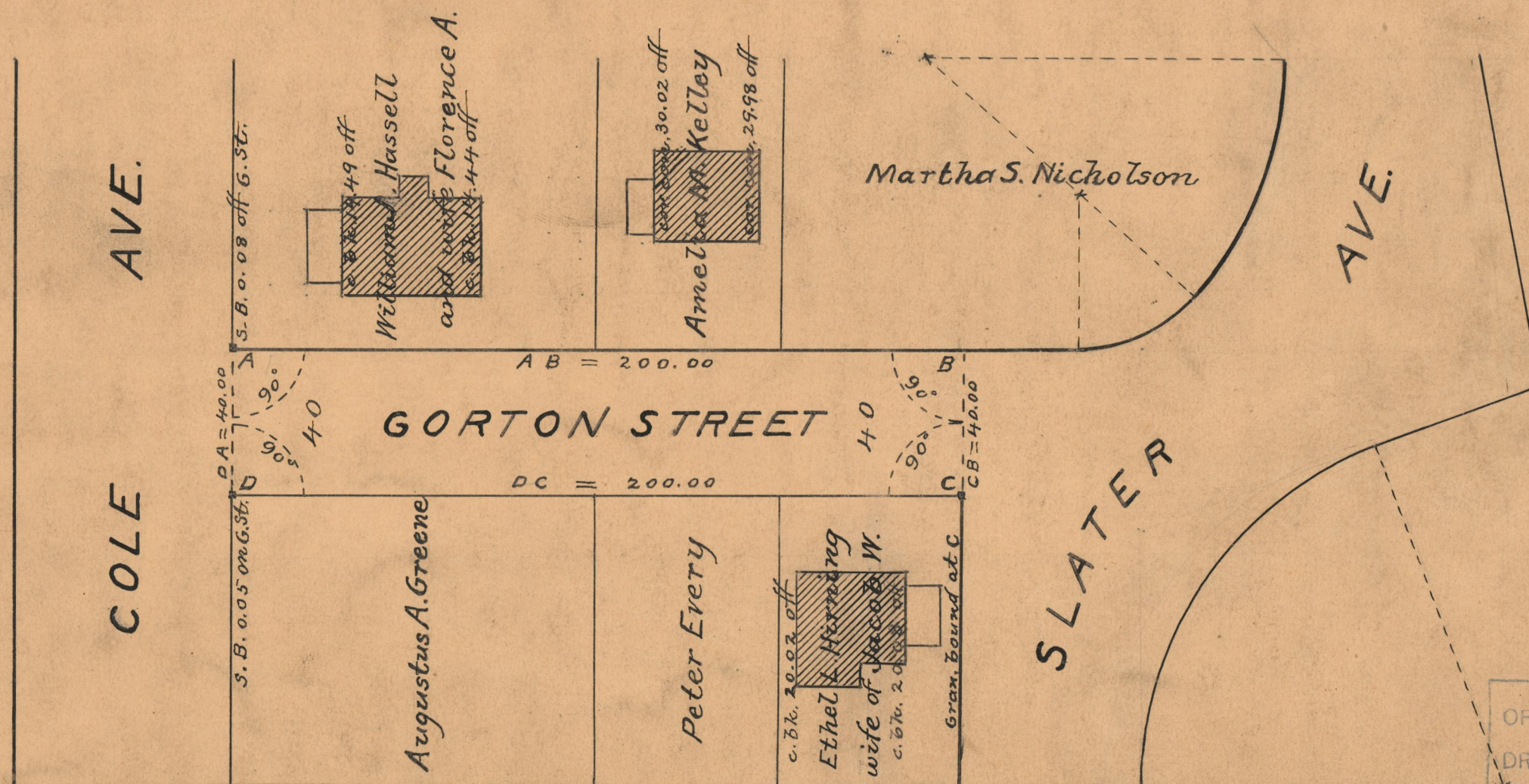
SCALE 40 FEET PER INCH

DECLARED AND ESTABLISHED A PUBLIC HIGHWAY BY RESOLUTION
 OF THE BOARD OF ALDERMEN
 FEBRUARY 17, 1927

PROVIDENCE, R.I.
 CITY ENGINEER'S OFFICE
 STREET LINE DEPT.

Jan. 17, 1927.

049266



OFFICE No. 23459
 DRAWER " 73
 SHEET "A-77