

Jan. 17, 1927

049265

PLAT OF

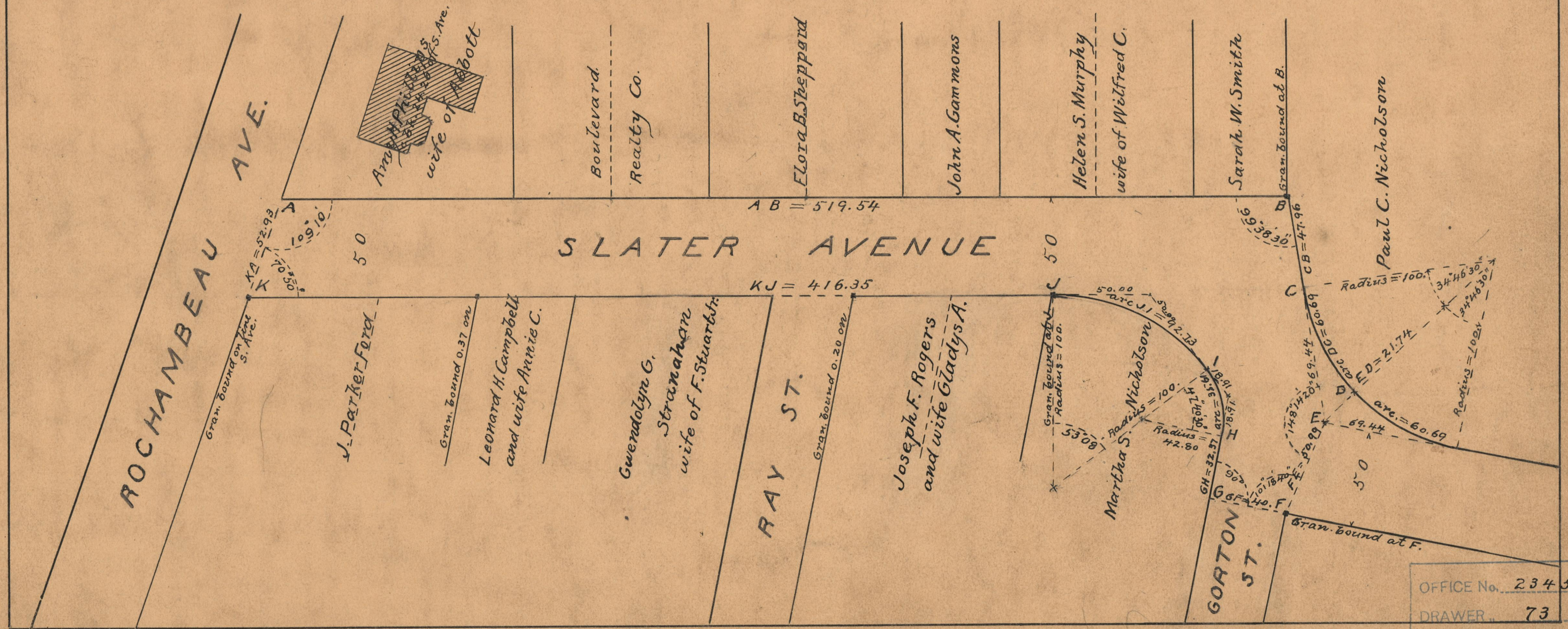
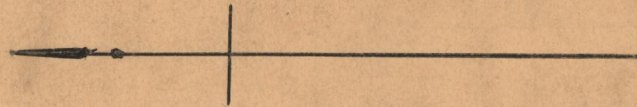
SLATER AVENUE

FROM ROCHAMBEAU AVE. TO SOUTH LINE OF GORTON ST.

SCALE 50 FEET PER INCH

DECLARED AND ESTABLISHED A PUBLIC HIGHWAY BY RESOLUTION
OF THE BOARD OF ALDERMEN

FEBRUARY 17, 1927



OFFICE No. 23458
DRAWER 73
SHEET "A-76"