

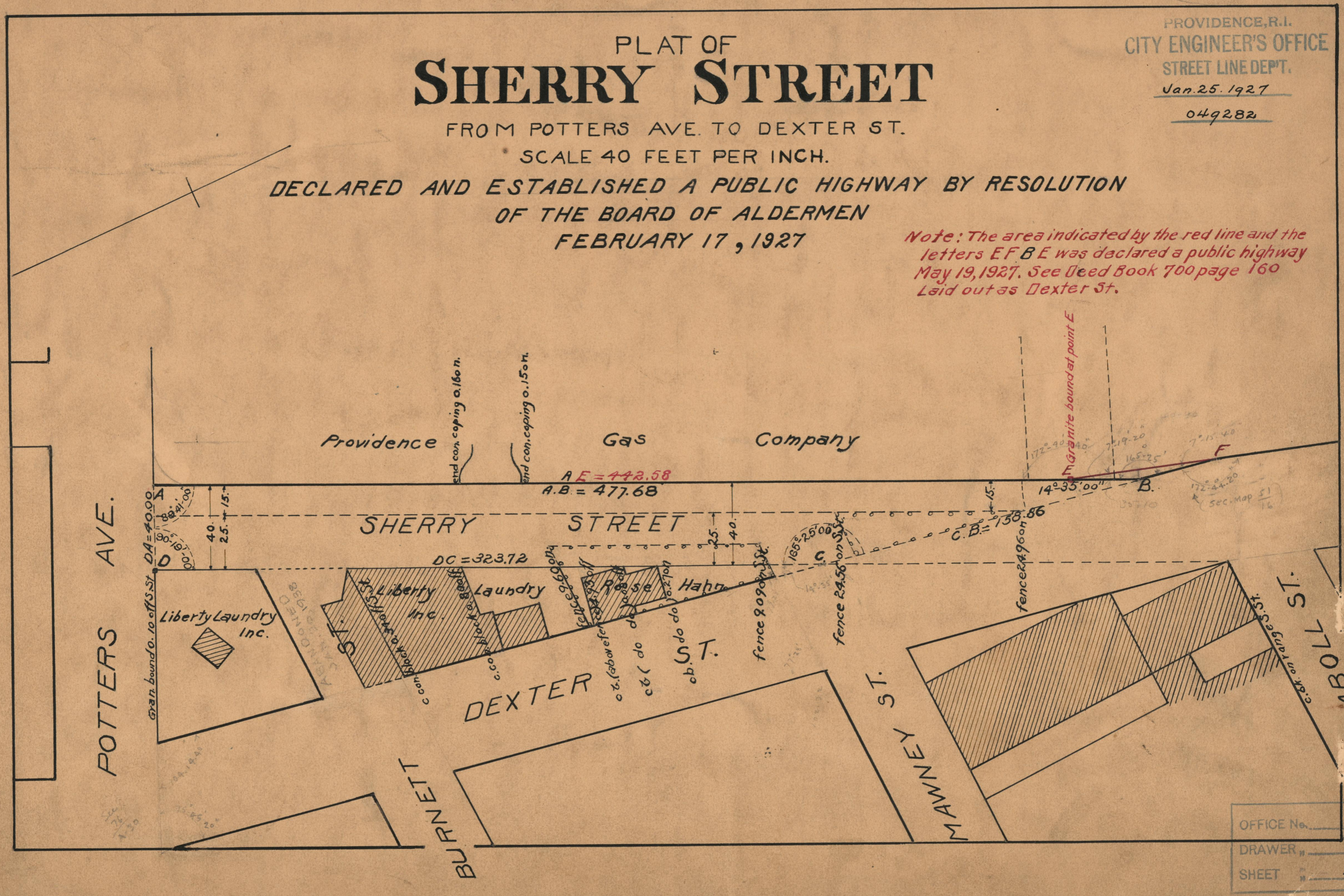
# PLAT OF SHERRY STREET

FROM POTTERS AVE. TO DEXTER ST.  
SCALE 40 FEET PER INCH.

DECLARED AND ESTABLISHED A PUBLIC HIGHWAY BY RESOLUTION  
OF THE BOARD OF ALDERMEN  
FEBRUARY 17, 1927

PROVIDENCE, R.I.  
CITY ENGINEER'S OFFICE  
STREET LINE DEPT.  
Jan. 25. 1927  
049282

*Note: The area indicated by the red line and the letters E F B E was declared a public highway May 19, 1927. See Deed Book 700 page 160 Laid out as Dexter St.*



OFFICE No.	23432
DRAWER "	73
SHEET "	A-75.