

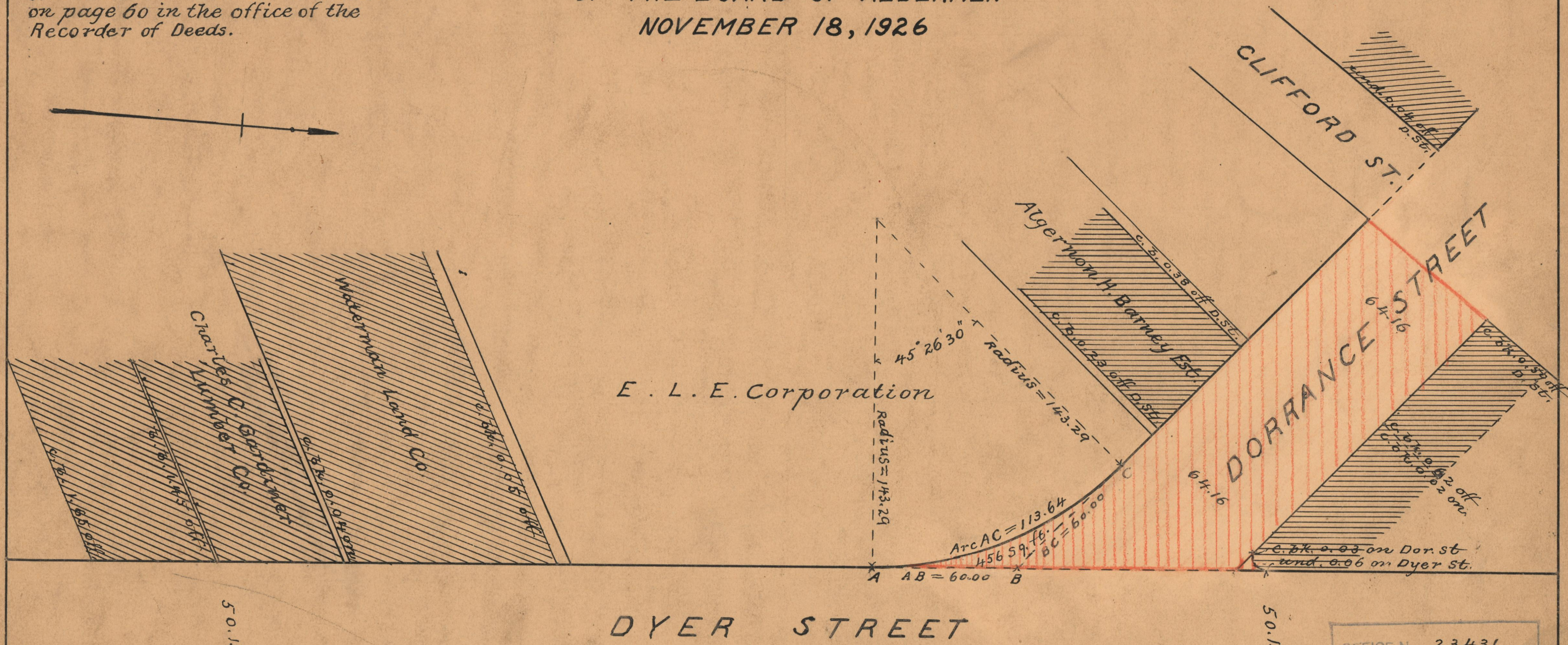
PLAT OF
 PARCEL OF LAND AT SOUTHWESTERLY CORNER OF
DORRANCE AND DYER STREETS

PROVIDENCE, R.I.
 CITY ENGINEER'S OFFICE
 STREET LINE DEPT.

Jan. 24, 1927
049279

Note. The parcel of land declared a public highway is denoted by the letters ABCA, and conforms with the deed recorded in Deed Book 694 on page 60 in the office of the Recorder of Deeds.

SCALE 40 FEET PER INCH
 DECLARED A PUBLIC HIGHWAY BY RESOLUTION
 OF THE BOARD OF ALDERMEN
 NOVEMBER 18, 1926



OFFICE No.	23431
DRAWER	73
SHEET	A-74