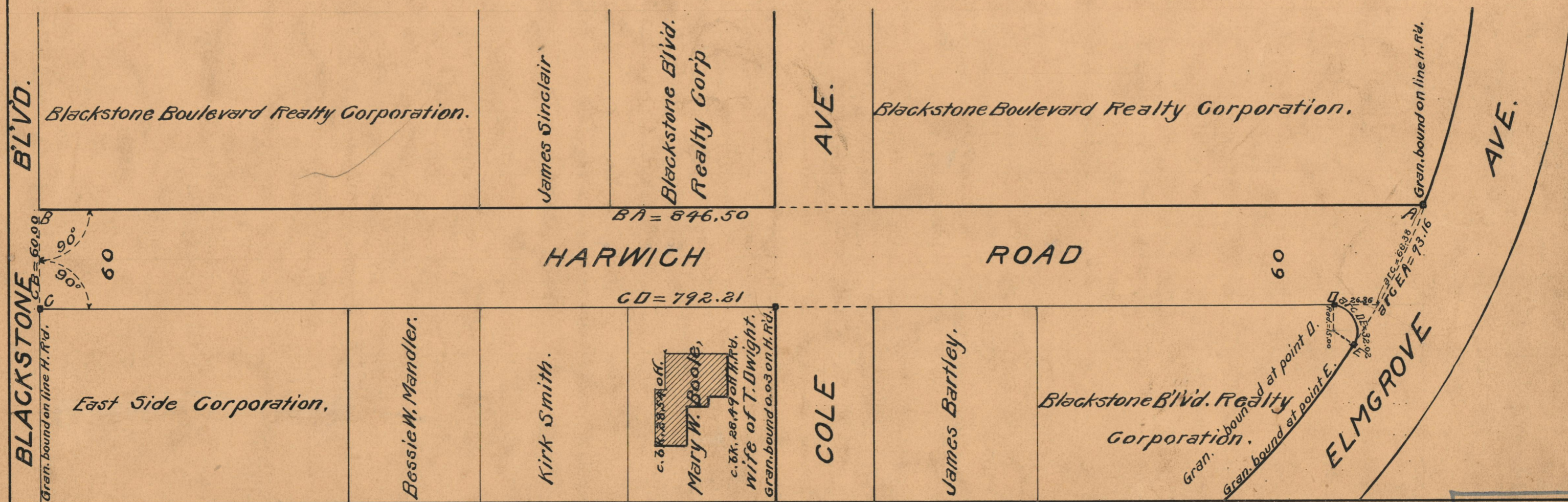
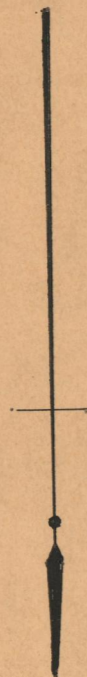


PLAT OF HARWICH ROAD

FROM ELMGROVE AVE. TO BLACKSTONE BL'VD.

SCALE 60 FEET PER INCH

*Declared a public highway by Resolution of the
Board of Aldermen
October 21, 1926.*



OFFICE No. 23388
 DRAWER " 73
 SHEET " A-71