

Note: The area declared a public highway is denoted by the letters ABCDEFGHA.

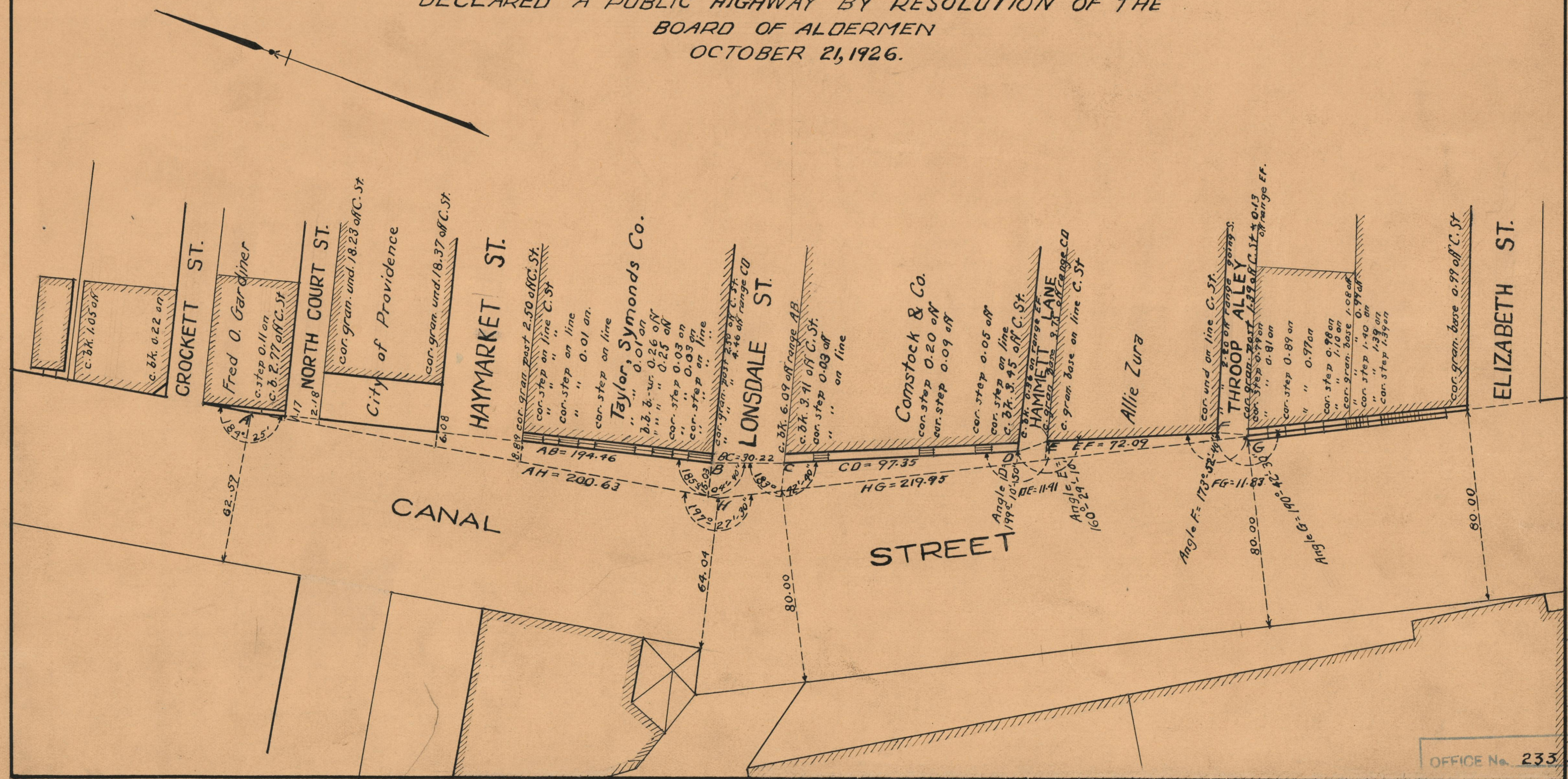
# PLAT OF CANAL STREET

FROM NEAR NORTH COURT ST. TO NEAR THROOP ALLEY

SCALE 40 FEET PER INCH

DECLARED A PUBLIC HIGHWAY BY RESOLUTION OF THE BOARD OF ALDERMEN  
OCTOBER 21, 1926.

PROVIDENCE, R.I.  
CITY ENGINEER'S OFFICE  
STREET LINE DEPT.  
April, 19, 1929  
051560



OFFICE No. 23352  
 DRAWER " 73  
 SHEET " A-69

Providence