

T.F.C. 2213-94

PROVIDENCE, R.I.

CITY ENGINEER'S OFFICE

STREET LINE DEPT.

Jan. 30, 1929

051370

PLAT OF GOLDSMITH STREET

FROM COLE AVE TO SLATER AVE.

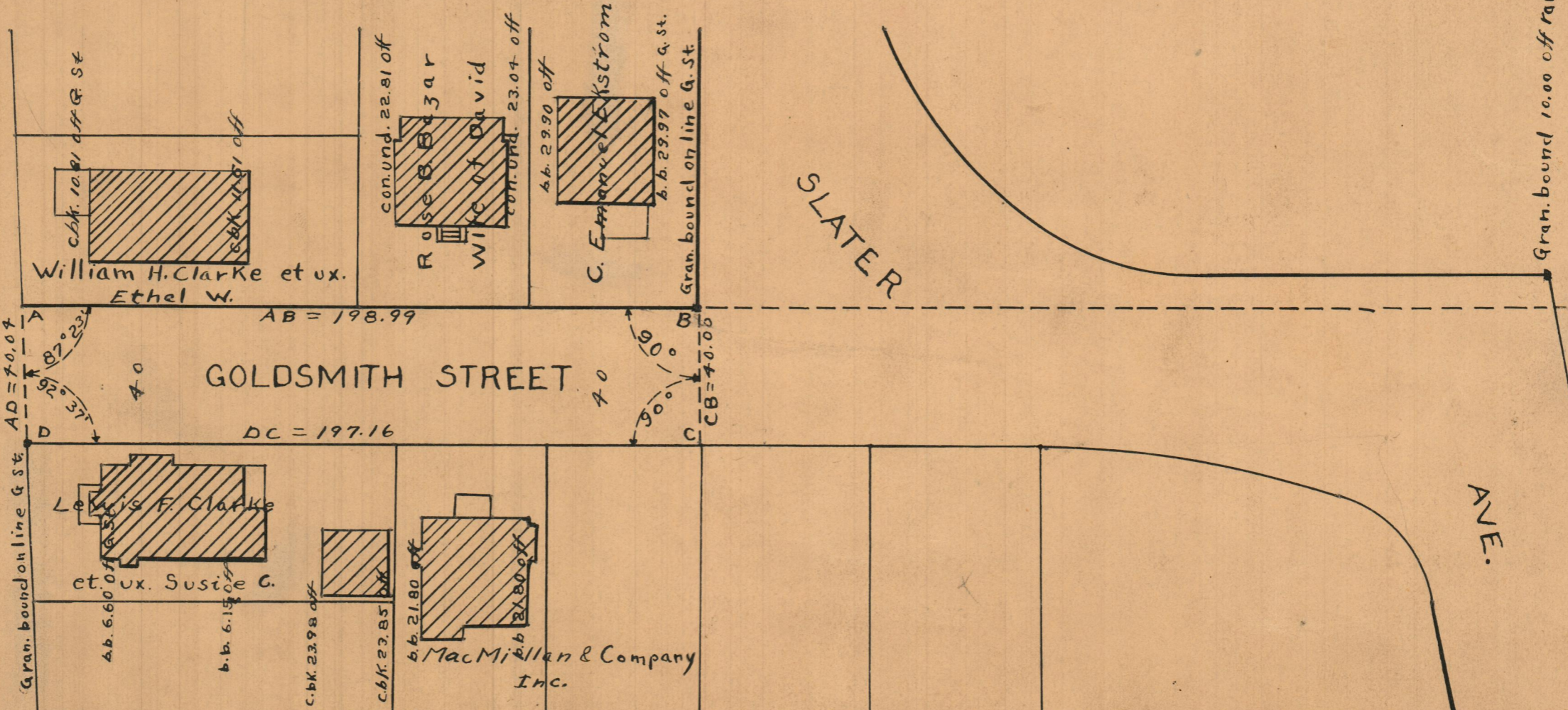
SCALE 40 FEET PER INCH

Declared and Established a public highway by Resolution
of the Board of Aldermen
October 21, 1926



AVE

COLE



Gran. bound 10.00 off range AB.

OFFICE No. 23349
 DRAWER # 73
 SHEET # A-68