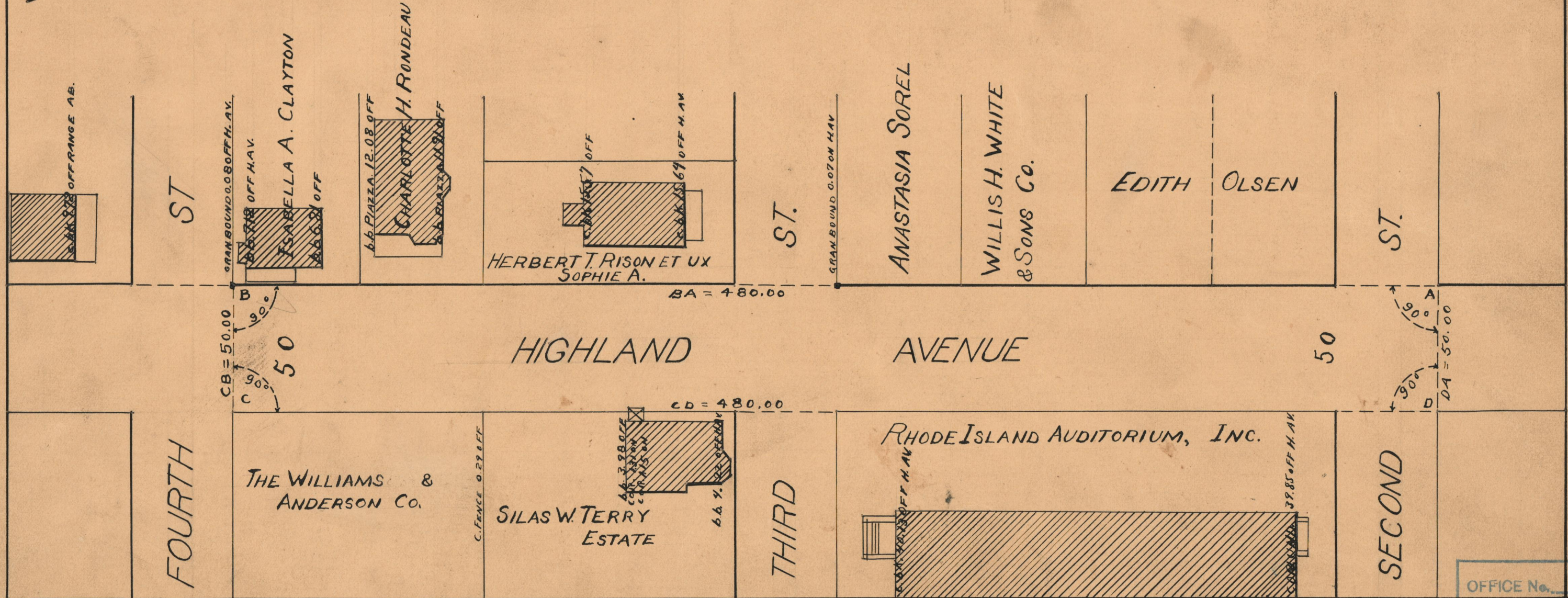
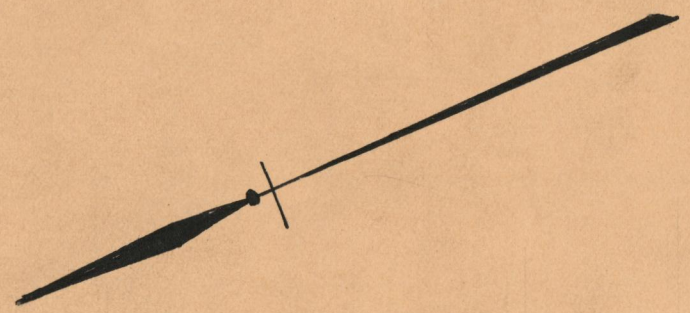


# PLAT OF HIGHLAND AVENUE

FROM SOUTHERLY LINE OF SECOND ST. FOURTH ST.  
SCALE 40 FEET PER INCH  
Declared and Established a public highway by Resolution  
of the Board of Aldermen  
November 4, 1926

PROVIDENCE, R.I.  
CITY ENGINEER'S OFFICE  
STREET LINE DEPT.  
Feb. 1, 1929  
051376



OFFICE No.	23348
DRAWER	73
SHEET	A-67