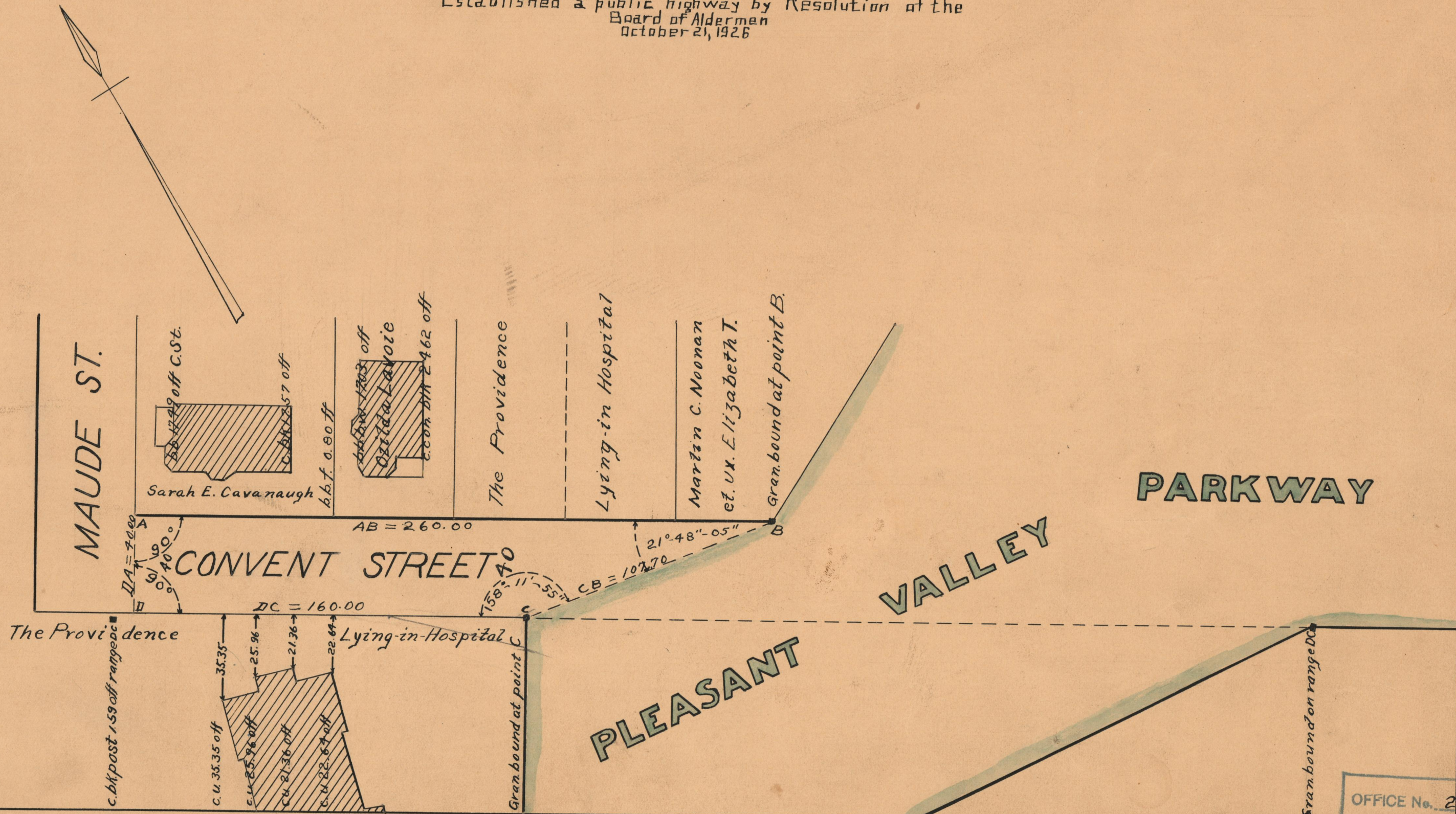


PLAT OF
CONVENT STREET
 FROM MAUDE ST TO PLEASANT VALLEY PARKWAY
 SCALE 40 FEET PER INCH
 Established a public highway by Resolution of the
 Board of Aldermen
 October 21, 1926

PROVIDENCE, R.I.
 CITY ENGINEER'S OFFICE
 STREET LINE DEPT.

Feb. 5, 1929

051385



OFFICE No. 23372
 DRAWER " 73
 SHEET A-65