

2357-143

PROVIDENCE, R.I.
CITY ENGINEER'S OFFICE
STREET LINE DEPT.

Feb. 12, 1929

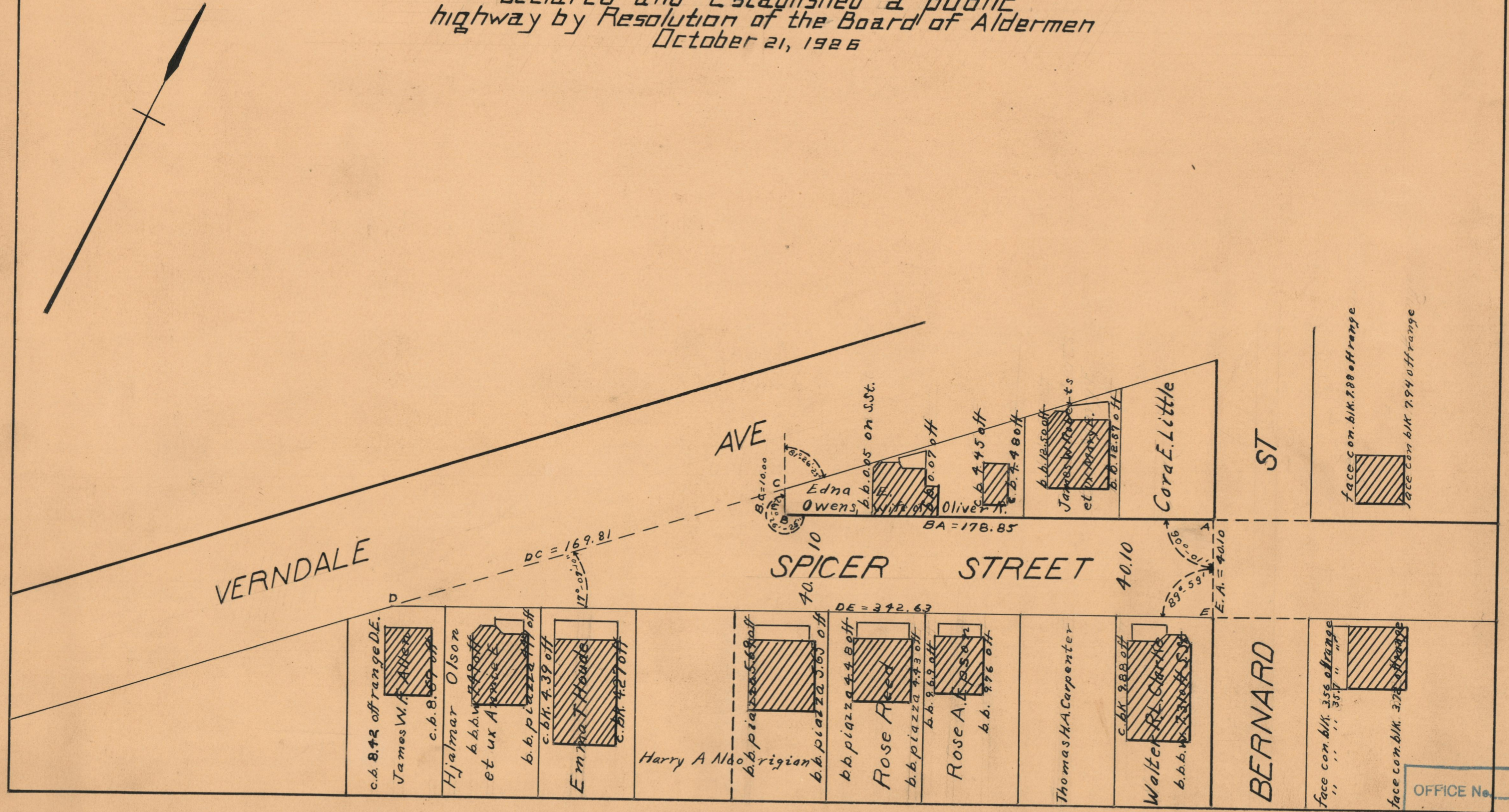
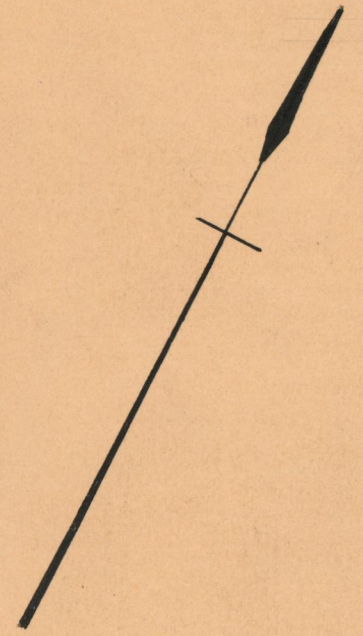
051902

PLAT OF SPICER STREET

FROM BERNARD ST. TO VERNDALE AVE.

SCALE 40 FEET PER INCH

*Declared and Established a public
highway by Resolution of the Board of Aldermen
October 21, 1926*



OFFICE No.	23341
DRAWER	73
SHEET	A-64