

PROVIDENCE, R.I.  
CITY ENGINEER'S OFFICE  
STREET LINE DEPT.

February 13, 1929

051404

# PLAT OF BRAMAN STREET

FROM HOPE ST. TO MORRIS AVE.

SCALE 30 FEET PER INCH

Declared a public highway by Resolution of the  
Board of Aldermen  
February 18, 1926



HOPE ST.

MORRIS AVE.

John Lisker

Charles E. Peterson

Sara Gyene Wald,  
wife of Adolph

Edwin C. Braman  
Estate

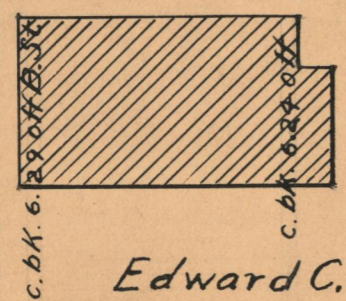
BRAMAN STREET

AB = 319.55

DC = 321.04

DA = 40.00  
89° 57' 00"  
100° 00' 00"

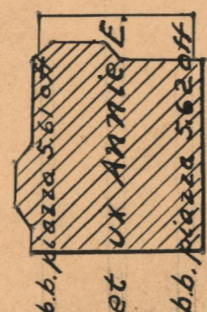
CB = 40.03  
92° 14' 00"  
87° 46' 00"



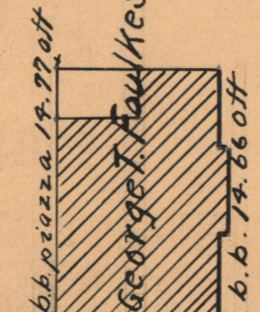
Edward C. Jordan



Joseph F. Williams

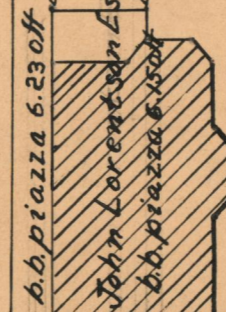


et ux ANNIE E.



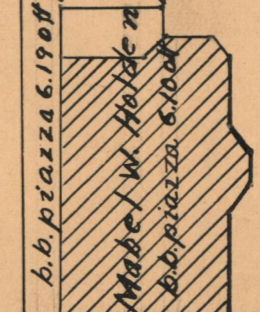
George T. Faulkes

Samuel F. Arnold, et ux Vera S. Simon Shatkin 1/2



John Laurentson Est.

& widow Mathilda C.



Mabel W. Holden

wife of Dana A.

OFFICE No. 23336  
DRAWER # 73  
SHEET # A-63