

G.W.S. 2507-57

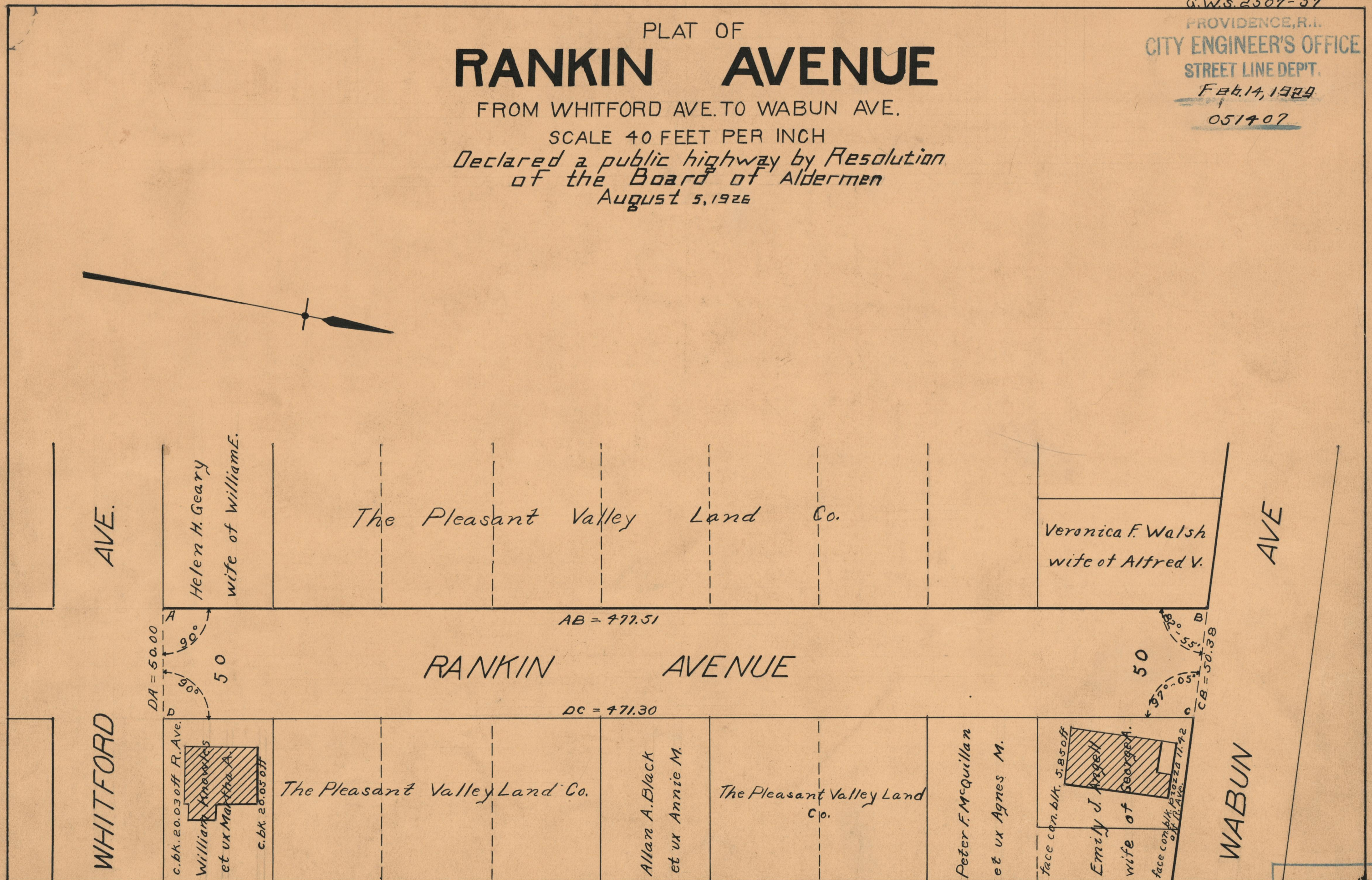
PROVIDENCE, R.I.
CITY ENGINEER'S OFFICE
STREET LINE DEPT.
Feb. 14, 1929
051407

PLAT OF RANKIN AVENUE

FROM WHITFORD AVE. TO WABUN AVE.

SCALE 40 FEET PER INCH

*Declared a public highway by Resolution
of the Board of Aldermen
August 5, 1926*



OFFICE No. 23335
DRAWER 73
SHEET A-62