

PLAT OF

WHITFORD AVENUE

FROM RIVER AVE. TO WESTERLY LINE OF RANKIN AVE.

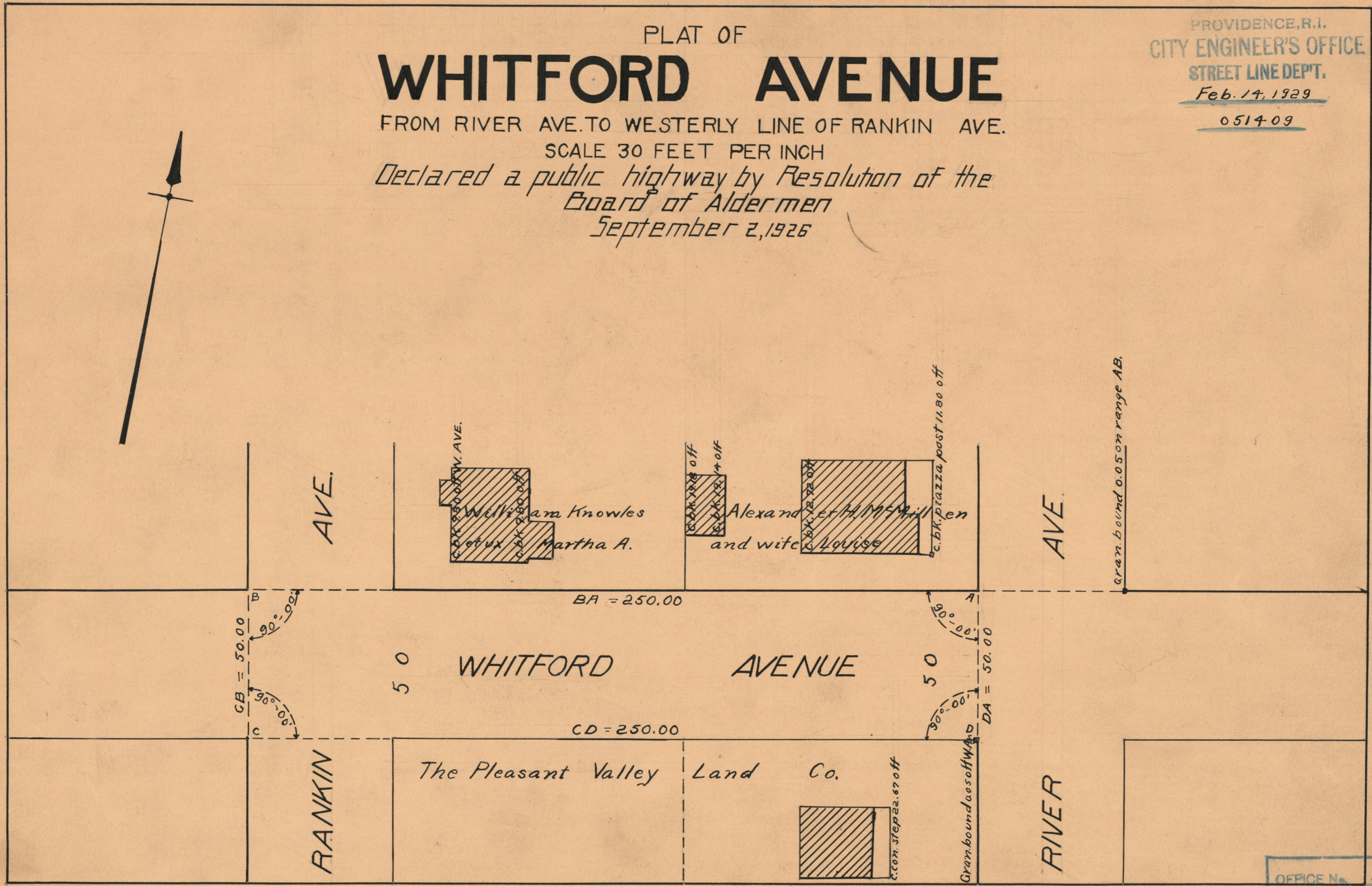
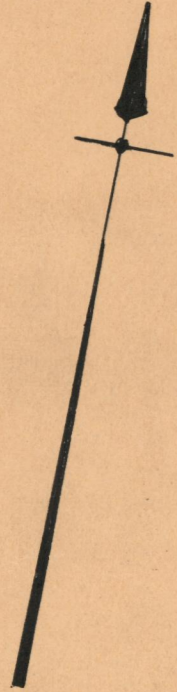
SCALE 30 FEET PER INCH

Declared a public highway by Resolution of the Board of Aldermen September 2, 1926

PROVIDENCE, R.I.
CITY ENGINEER'S OFFICE
STREET LINE DEPT.

Feb. 14, 1929

051409



gran. bound 0.05 on range AB.

OFFICE No. 23334
DRAWER " 73
SHEET " A-61