

PLAT OF WHITFORD AVENUE

PROVIDENCE, R.I.
CITY ENGINEER'S OFFICE
STREET LINE DEPT.

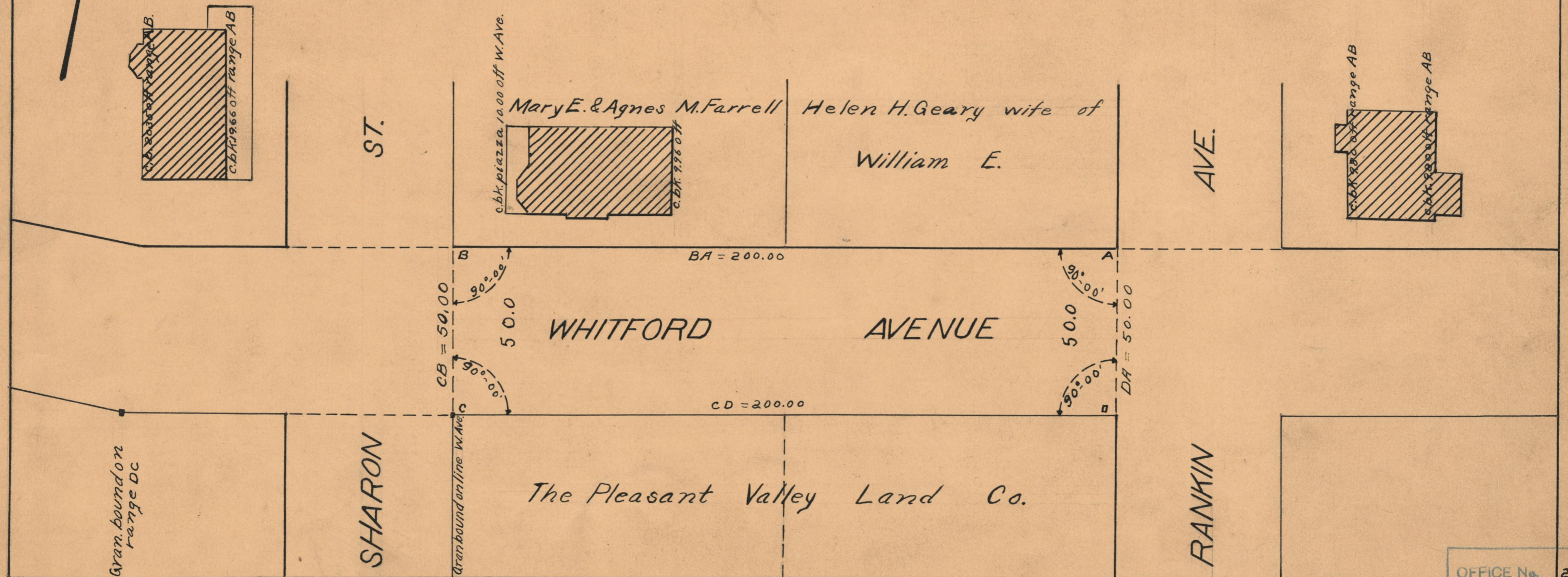
Feb. 18, 1929

051412

FROM RANKIN AVE TO SHARON ST.

SCALE 30 FEET PER INCH

*Declared a public highway by Resolution of the
Board of Aldermen
August 5, 1926*



OFFICE No.	23333
DRAWER #	73
SHEET #	A-60