

PROVIDENCE, R.I.
CITY ENGINEER'S OFFICE
STREET LINE DEPT.

Feb. 21, 1929

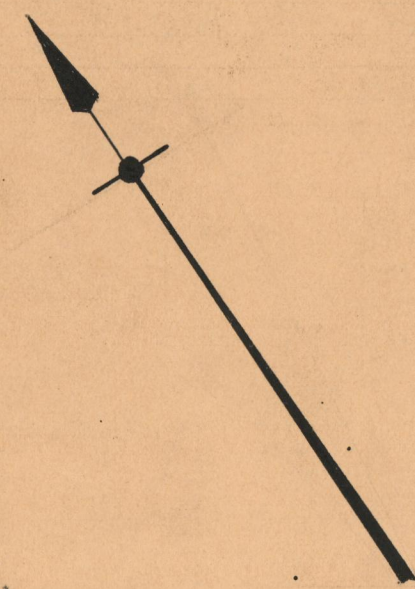
051420

PLAT OF SECOND STREET

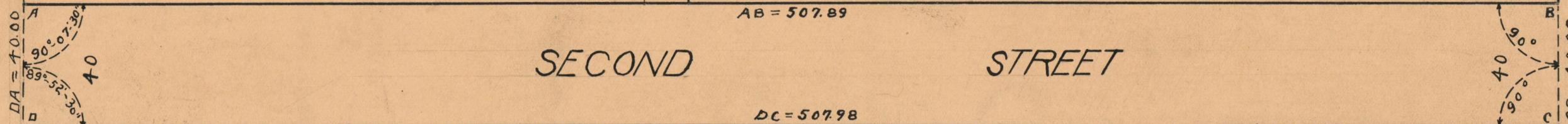
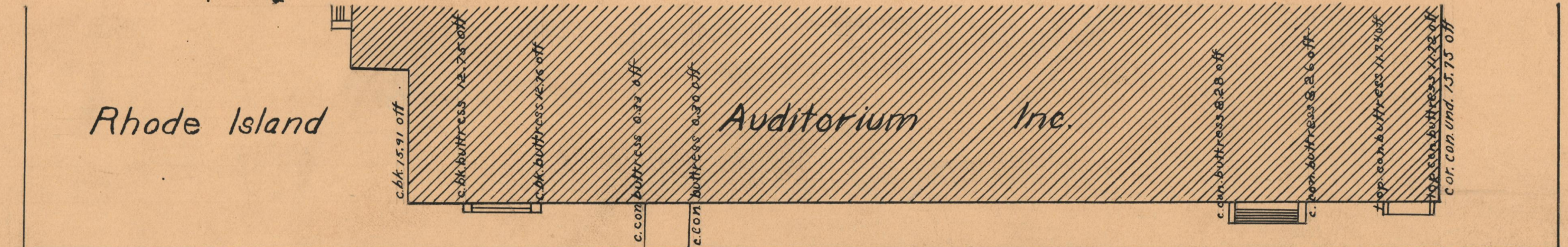
FROM NORTH MAIN ST. TO HIGHLAND AVE.

SCALE 40 FEET PER INCH

*Established a public highway by Resolution
of the Board of Aldermen
August 5, 1926*



NORTH MAIN ST.



HIGHLAND AVE

HIGHLAND AVE

OFFICE No	23323
DRAWER	73
SHEET	A-58