

Note: The area established and declared a public highway is indicated by the letters ABCDEA

PLAT OF

NINTH STREET

IN TWO SHEETS

FROM HOPE TO PORTION PREVIOUSLY CONDEMNED

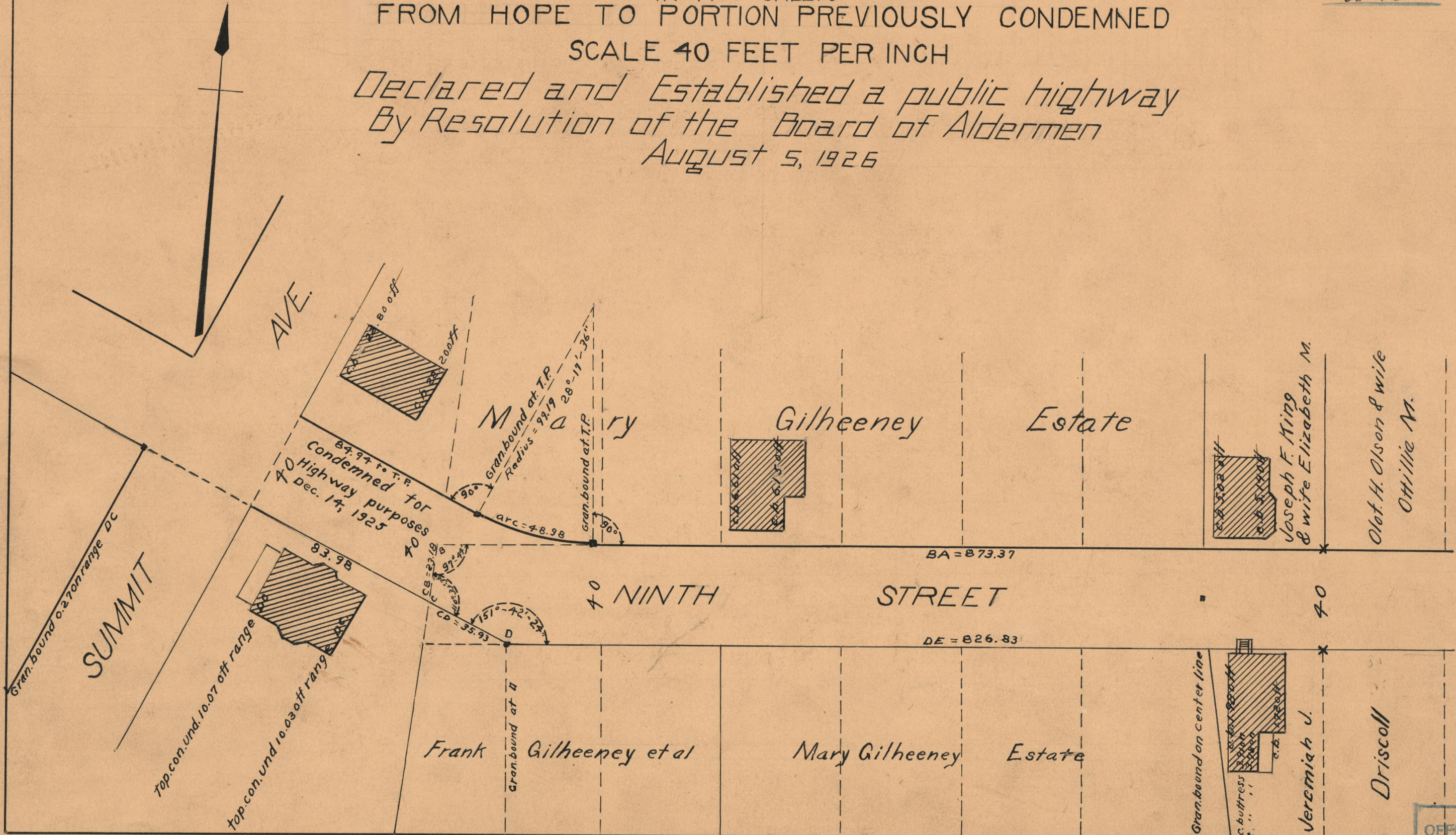
SCALE 40 FEET PER INCH

*Declared and Established a public highway
By Resolution of the Board of Aldermen
August 5, 1926*

PROVIDENCE, R.I.
CITY ENGINEER'S OFFICE
STREET LINE DEPT.

Feb. 26, 1929

051429



OFFICE No.	23316
DRAWER	73
SHEET	A-56