

PROVIDENCE, R.I.
CITY ENGINEER'S OFFICE
STREET LINE DEPT.

MAR 6, 1929

051449

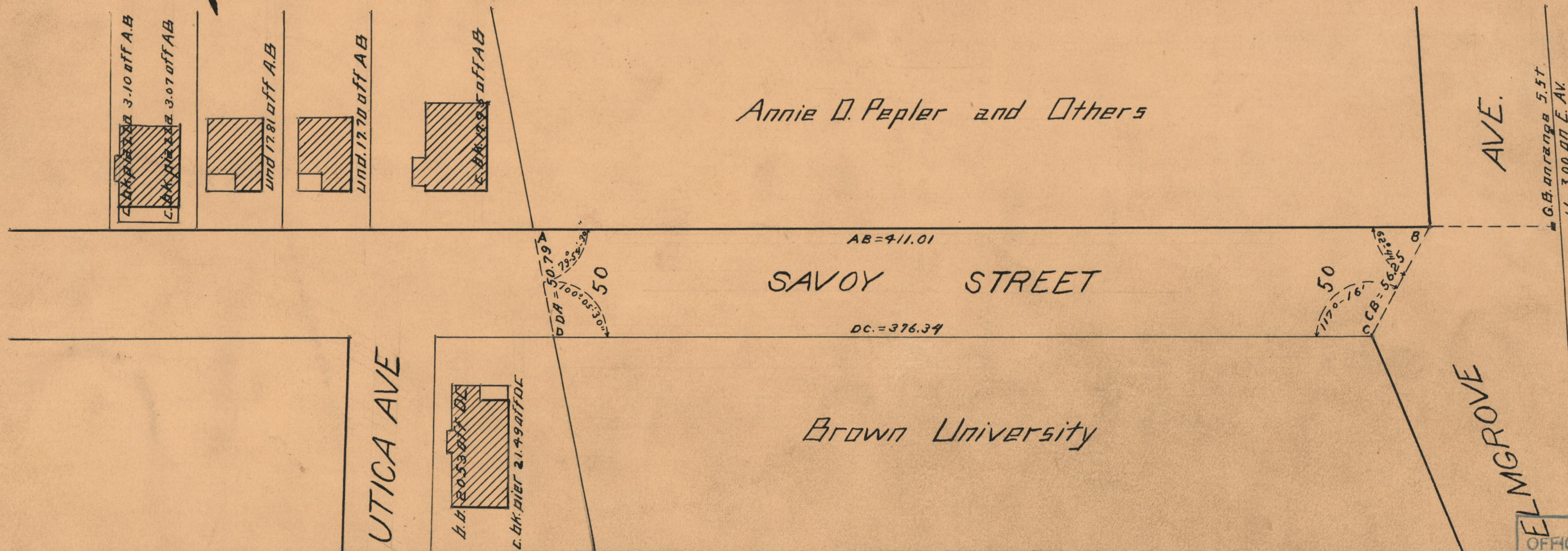
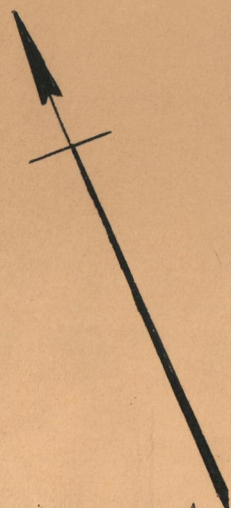
PLAT OF

SAVOY STREET

FROM PORTION ALREADY RECEIVED TO ELMGROVE AVE.

SCALE 50 FEET PER INCH

*Declared a public highway by Resolution
of the Board of Aldermen
April 1, 1926*



OFFICE NO.	23287
DRAWER "	73
SHEET "	A-51