

T.F.E. 2471-70+75

PROVIDENCE, R.I.
CITY ENGINEER'S OFFICE
STREET LINE DEPT.

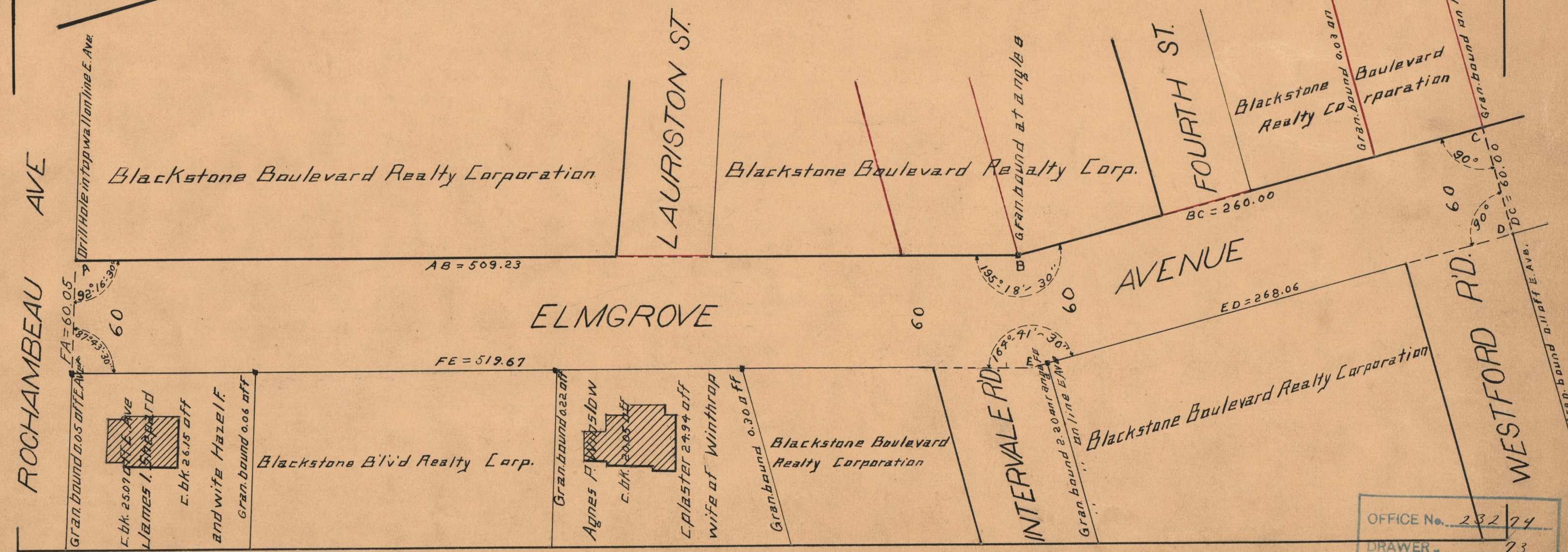
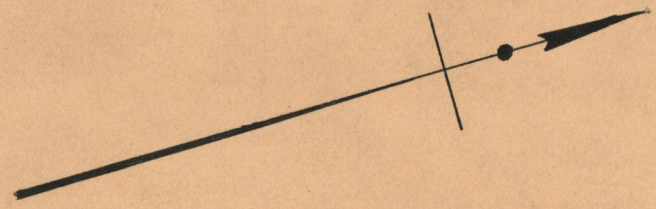
MAY 7, 1929

051454

PLAT OF ELMGROVE AVENUE

FROM ROCHAMBEAU AVE. TO NORTHERLY LINE OF WESTFORD R'D.
SCALE 50 FEET PER INCH

*Declared a public highway by Resolution of the
Board of Aldermen
May 6, 1926.*



OFFICE No.	23274
DRAWER	73
SHEET	A-50