

March 13, 1929

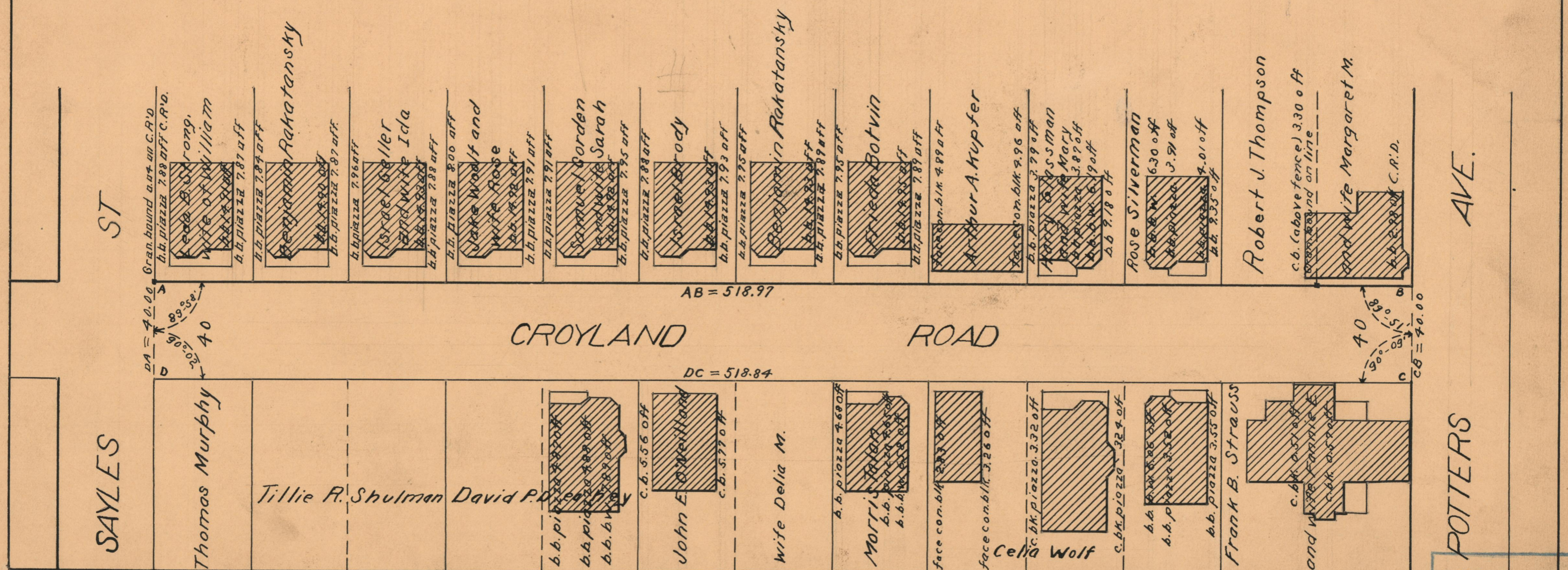
051972

PLAT OF CROYLAND ROAD

FROM SAYLES ST. TO POTTERS AVE.

SCALE 40 FEET PER INCH

*Established a public highway by Resolution of the
Board of Aldermen
June 17, 1926.*



SAYLES ST

CROYLAND ROAD

POTTERS AVE.

DA = 40.00
189.58
202.00
40

AB = 518.97

DC = 518.84

40
83.00
51.51
CB = 40.00

OFFICE NO. 23268
DRAWER 73
SHEET A-96