

PROVIDENCE, R.I.
CITY ENGINEER'S OFFICE
STREET LINE DEPT.
March 19, 1929.

051489

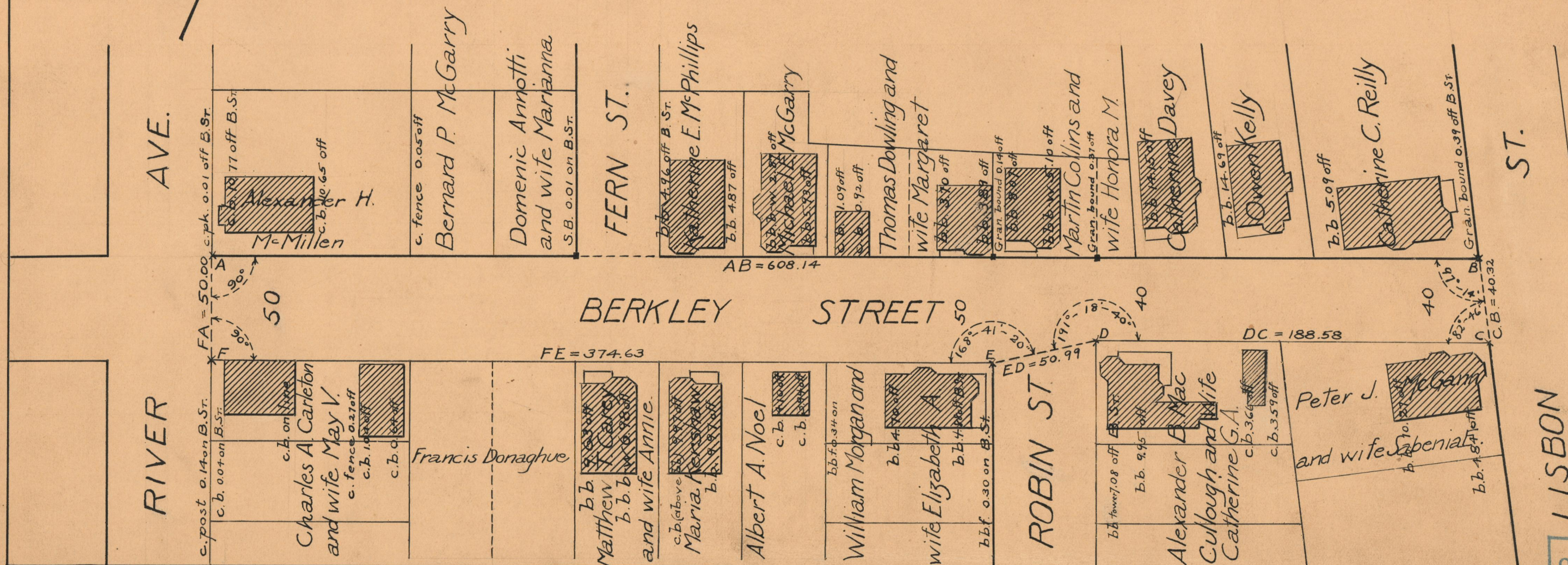
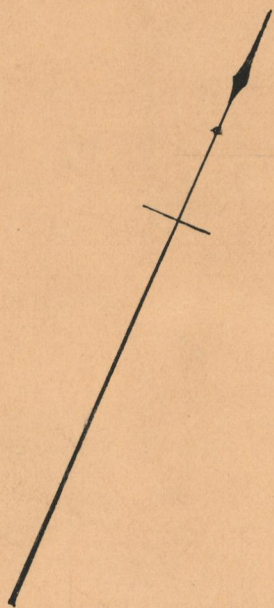
PLAT OF BERKLEY STREET

FROM RIVER AVE. TO LISBON ST.

SCALE 50 FEET PER INCH

DECLARED AND ESTABLISHED A PUBLIC HIGHWAY BY RESOLUTION
OF THE BOARD OF ALDERMEN

JUNE 17 1926.



OFFICE No.	23267
DRAWER	73
SHEET	A-45