

March 13, 1929

051474

PLAT OF BALTON ROAD

FROM ROCHAMBEAU AVE. TO INTERVALE R.D.

SCALE 50 FEET PER INCH

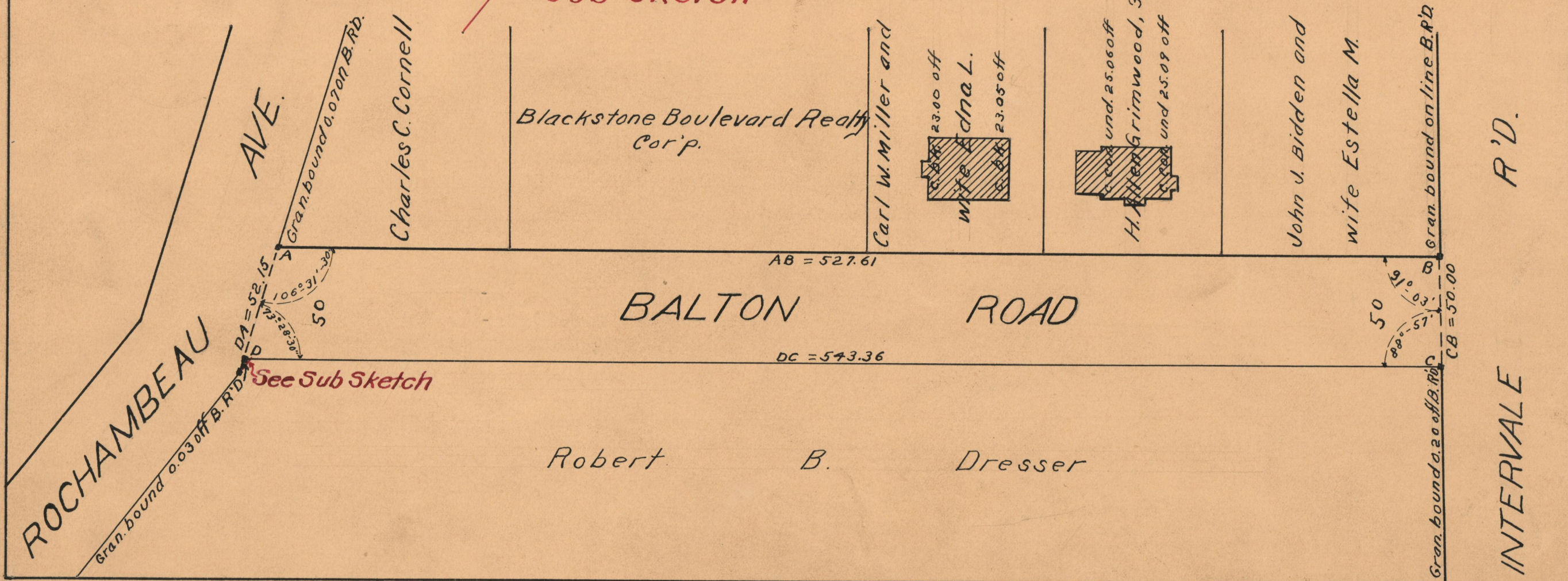
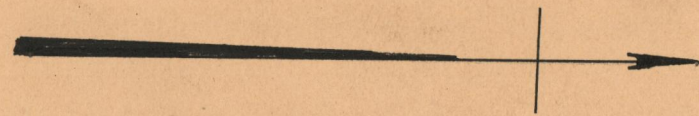
Declared a public highway by Resolution of the
Board of Aldermen
May 6, 1926.

Balton R'd.

The area defined by the letters \square EF was
declared a Public Highway May 17, 1928.

Rochambeau Ave.

Sub Sketch



OFFICE No.	23220
DRAWER	73
SHEET	A-44