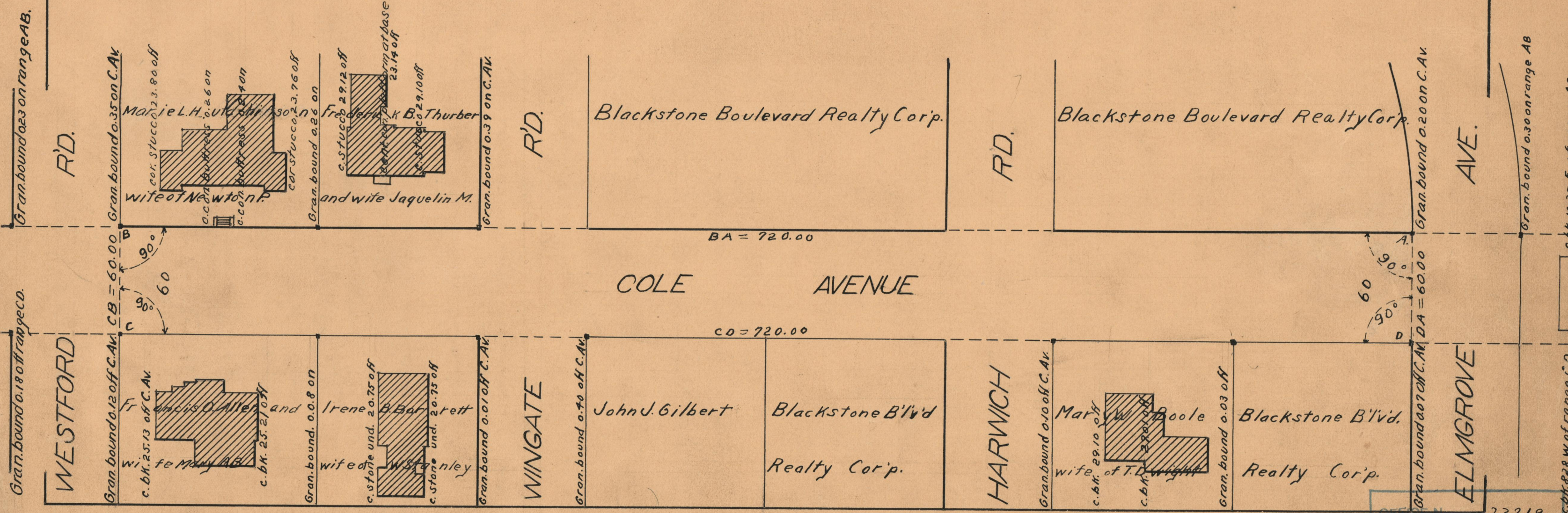
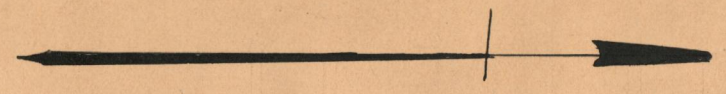


PLAT OF COLE AVENUE

FROM ELMGROVE AVE. TO PORTION ALREADY RECEIVED
SCALE 50 FEET PER INCH

DECLARED A PUBLIC HIGHWAY BY RESOLUTION
OF THE BOARD OF ALDERMEN
MAY 6, 1926



OFFICE No. 23219
 DRAWER # 73
 SHEET # A-43