

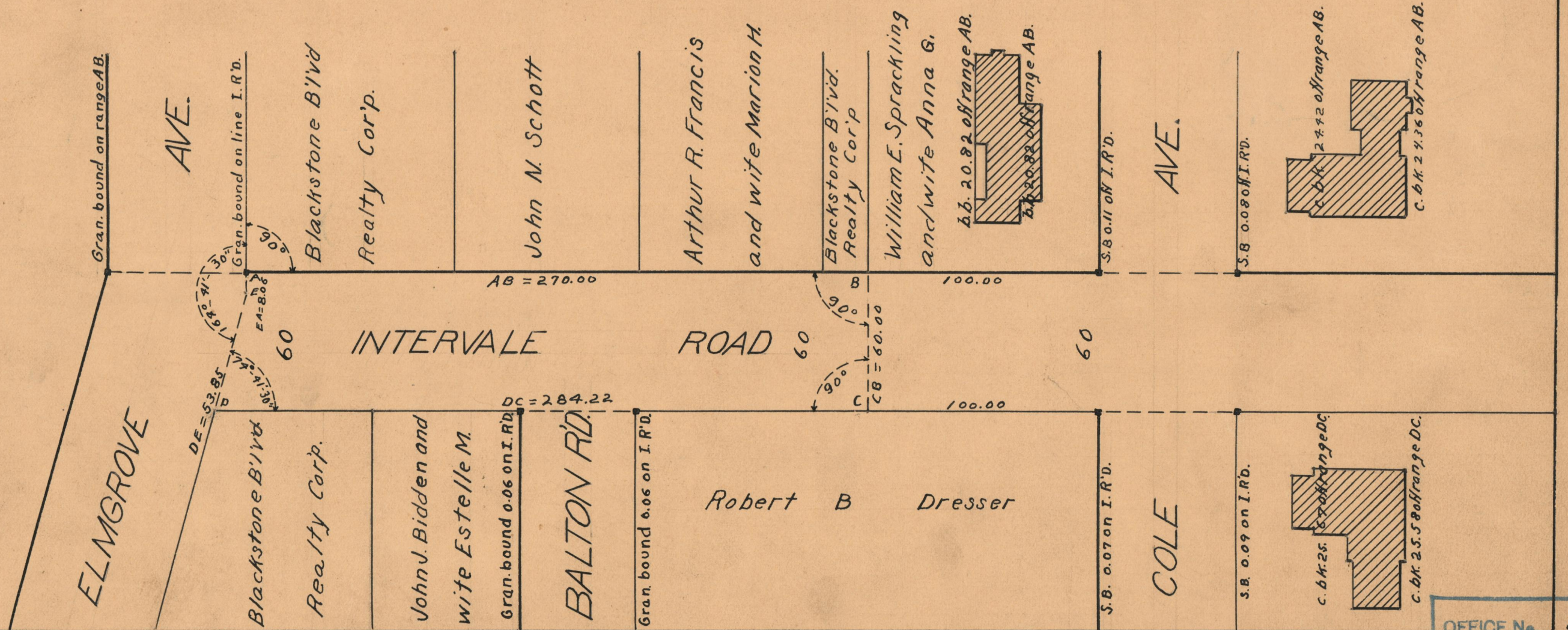
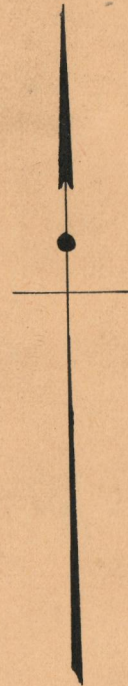
March 22, 1929

051498

PLAT OF INTERVALE ROAD

FROM ELMGROVE AVE TO PORTION ALREADY RECEIVED
SCALE 50 FEET PER INCH

DECLARED A PUBLIC HIGHWAY BY RESOLUTION
OF THE BOARD OF ALDERMEN
MAY 6, 1926



OFFICE No.	23218
DRAWER	73
SHEET	A-42