

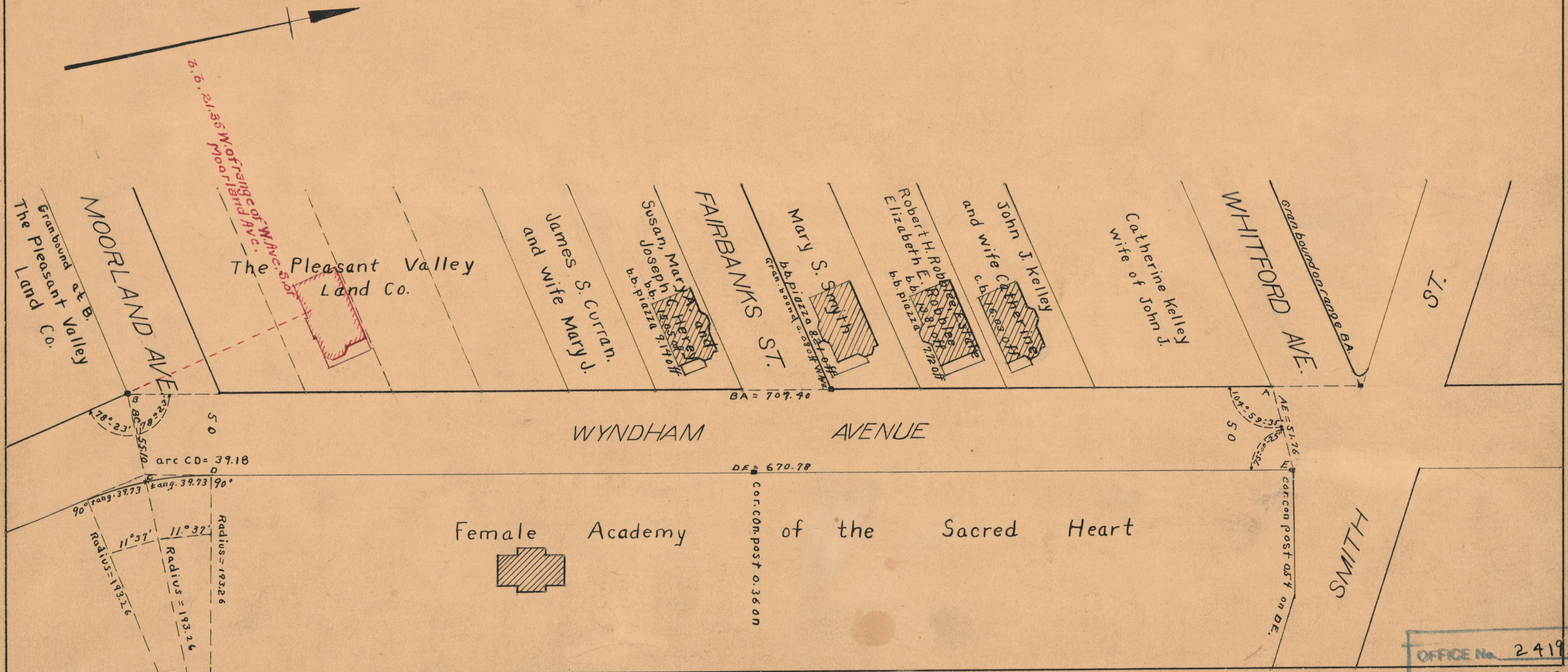
PROVIDENCE, R.I.
CITY ENGINEER'S OFFICE
STREET LINE DEPT.

April, 10, 1929

051540

PLAT OF
WYNDHAM AVENUE
FROM WHITFORD AVE. TO SOUTH LINE OF MOORLAND AVE.
SCALE 60 FEET PER INCH

AND ESTABLISHED
DECLARED A PUBLIC HIGHWAY BY RESOLUTION
OF THE BOARD OF ALDERMEN
APRIL 15, 1926



OFFICE No.	24195
DRAWER	73
SHEET	A-40