

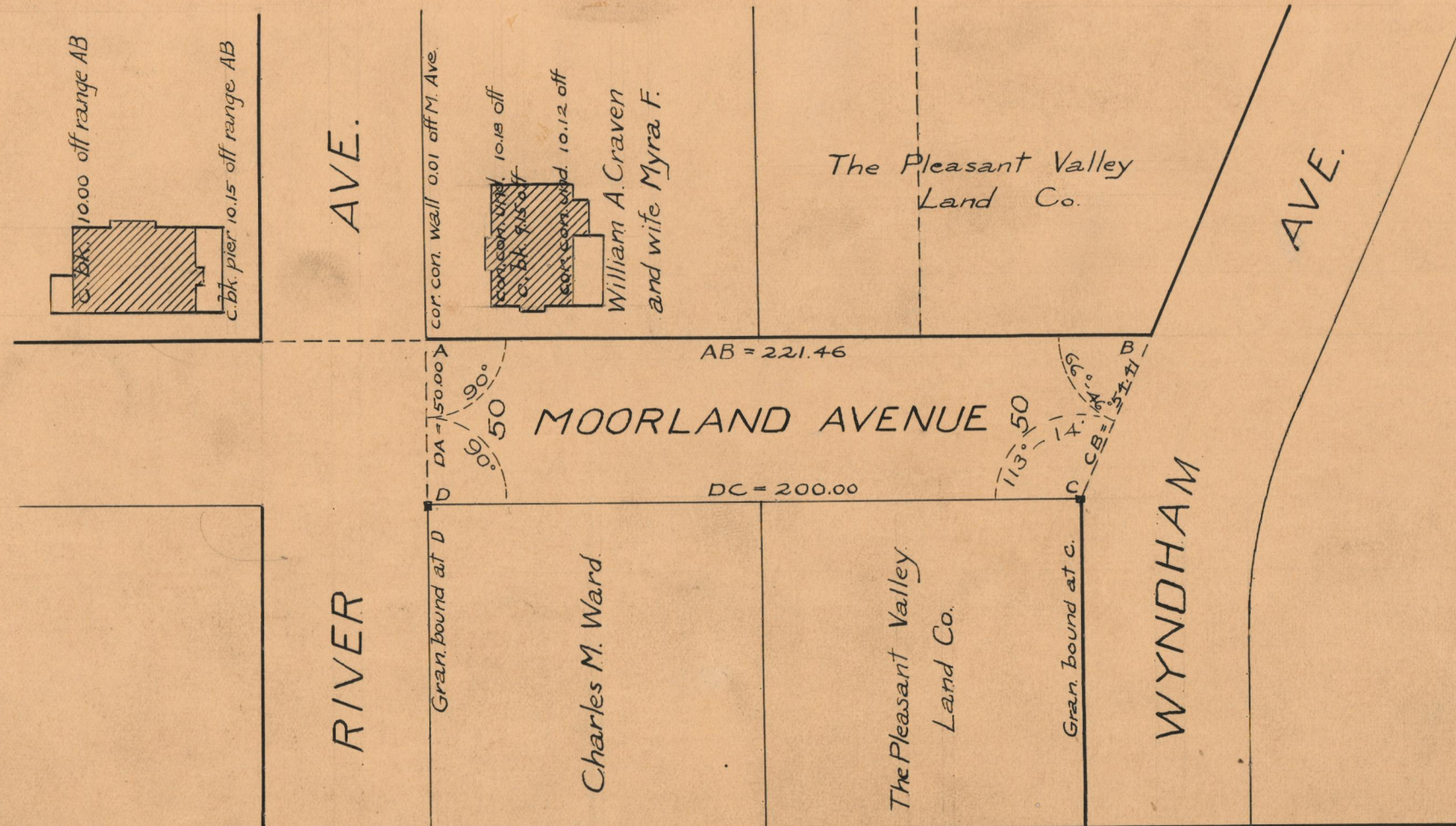
PROVIDENCE, R.I.  
CITY ENGINEER'S OFFICE  
STREET LINE DEPT.  
March 28, 1929.  
051515

# PLAT OF MOORLAND AVENUE

FROM WYNDHAM AVE. TO RIVER AVE.

SCALE 50 FEET PER INCH

DECLARED A PUBLIC HIGHWAY BY RESOLUTION  
OF THE BOARD OF ALDERMEN  
FEBRUARY 18, 1926.



OFFICE No.	24194
DRAWER	73
SHEET	A-39