

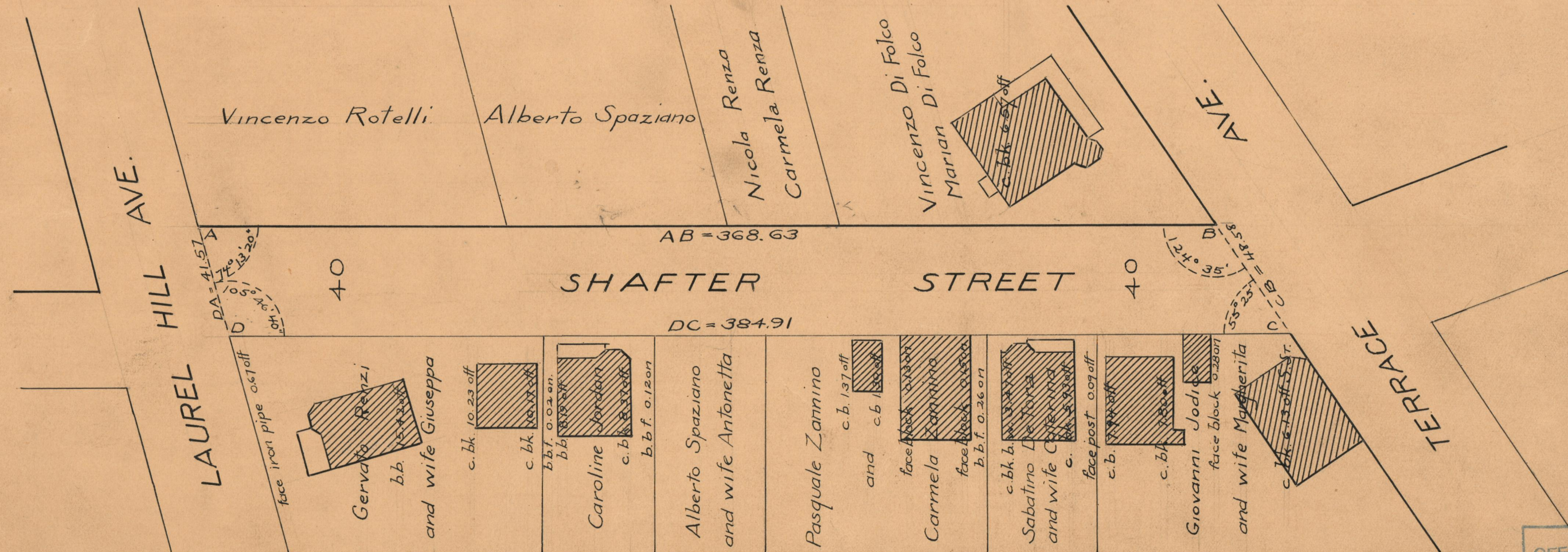
PLAT OF SHAFTER STREET

SCALE 40 FEET PER INCH

FROM LAUREL HILL AVE. TO TERRACE AVE.

DECLARED AND ESTABLISHED A PUBLIC HIGHWAY BY RESOLUTION
OF THE BOARD OF ALDERMEN

MAY 20, 1926.



OFFICE No.	24191
DRAWER	73
SHEET	A-38