

PROVIDENCE, R.I.  
CITY ENGINEER'S OFFICE

STREET LINE DEPT.

May 8, 1929

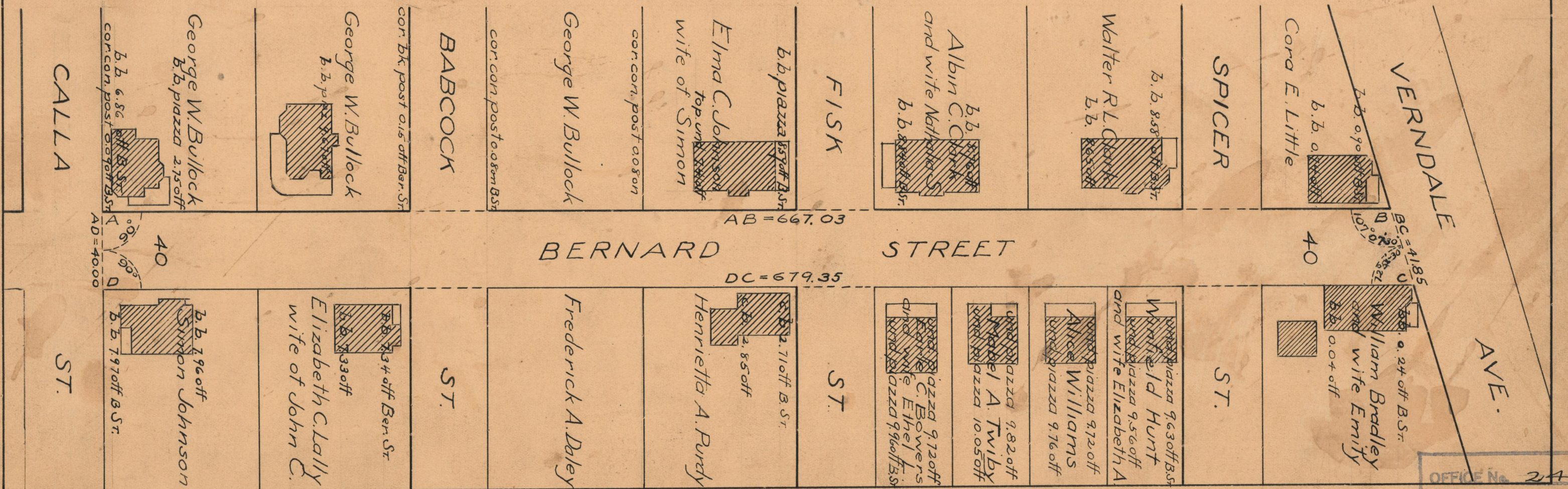
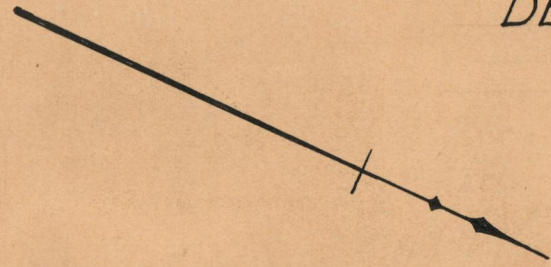
051751

# BERNARD STREET

FROM CALLA ST. TO VERNDALE AVE.

SCALE 50 FEET PER INCH

DECLARED AND ESTABLISHED A PUBLIC HIGHWAY BY RESOLUTION  
OF THE BOARD OF ALDERMEN  
MAY 20, 1926.



OFFICE No. 24190  
 DRAWER 73  
 SHEET A-37