

Note: The area declared and established a public highway is indicated by the letters ABCDA.  
The lines thus fixed conform with the "Sheffield Smith Plat No 4" recorded on card 477 in the office of the Recorder of Deeds.

PLAT OF

# GROSVENOR AVENUE

FROM CHALKSTONE AVE TO PORTION CONDEMNED AT OR NEAR PLEASANT VALLEY PARKWAY

IN TWO SHEETS

SCALE 40 FEET PER INCH

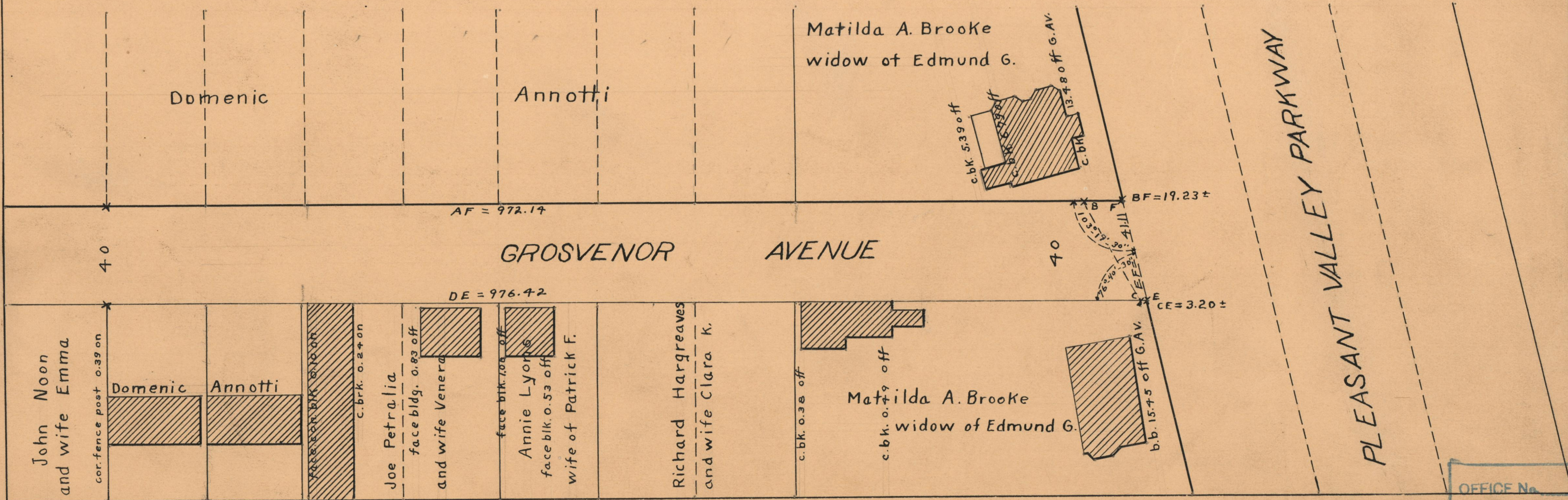
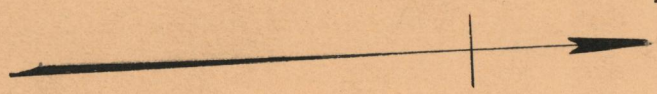
*Declared and Established a public highway by Resolution of the Board of Aldermen March 18, 1926*

CITY ENGINEER'S OFFICE  
STREET LINE DEPT.

Apr. 16, 1929

051546

Witness, \_\_\_\_\_ City Clerk.



OFFICE No. 24146  
 DRAWER # 73  
 SHEET # A-36