

Note: The area declared and established a public highway is indicated by the letters ABCDA.

The lines thus fixed conform with the "Sheffield Smith Plat No 4" recorded on card 477 in the office of the Recorder of Deeds.

PROVIDENCE, R.I.
CITY ENGINEER'S OFFICE
STREET LINE DEPT.

Apr. 16, 1929

051545

PLAT OF GROSVENOR AVENUE

FROM CHALKSTONE AVE. TO PORTION CONDEMNED AT OR NEAR PLEASANT VALLEY PARKWAY

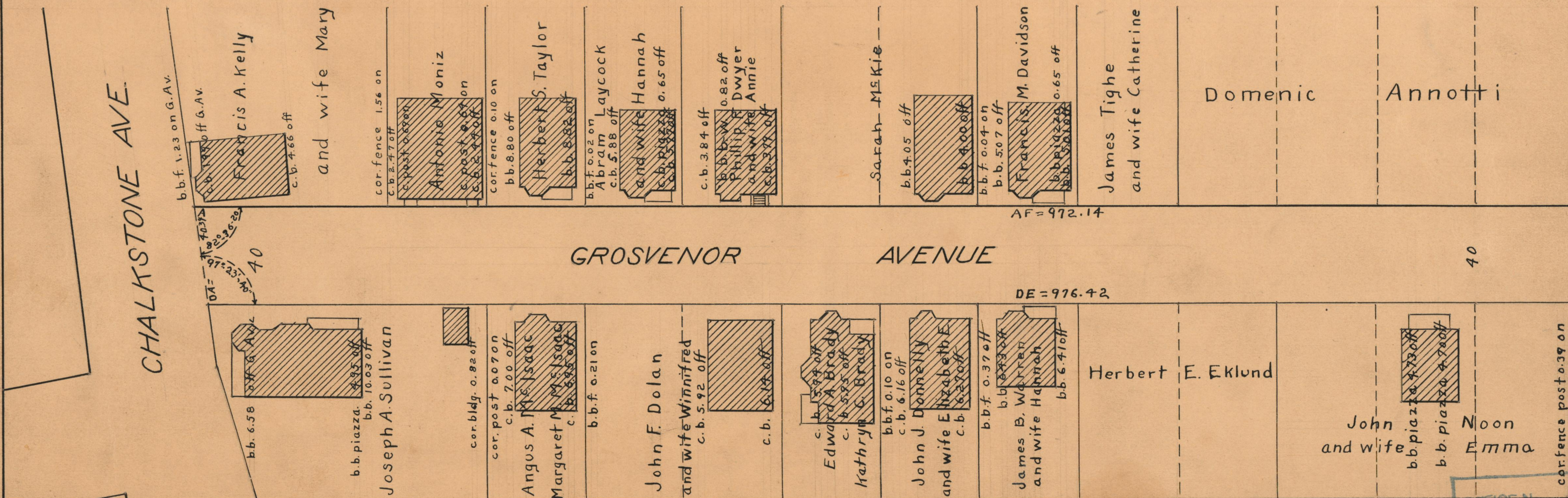
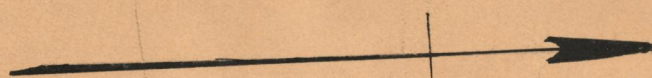
IN TWO SHEETS

SCALE 40 FEET PER INCH

*Declared and Established a public highway by Resolution
of the Board of Aldermen
March 18, 1926.*

Witness,

City Clerk



OFFICE No. 24145
 DRAWER 73
 SHEET A-35