

Note: The area declared a public highway is indicated by the letters ABCDEFGA.  
 The lines thus fixed conform with the "Westerleigh Plat" recorded on Card 1070 in the office of the Recorder of Deeds.

# PLAT OF GENTIAN AVENUE

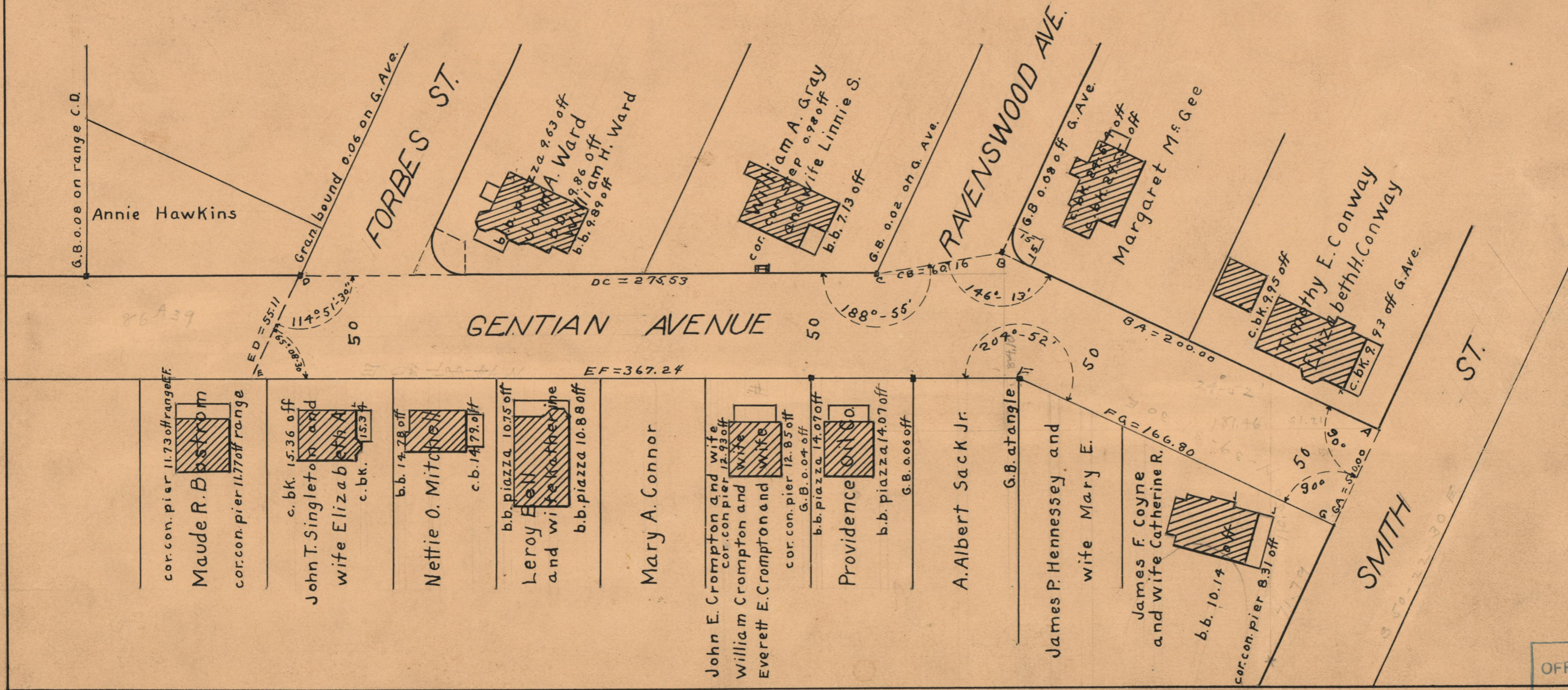
FROM SMITH ST. TO NORTHERLY LINE OF FORBES ST.

SCALE 50 FEET PER INCH

DECLARED A PUBLIC HIGHWAY BY RESOLUTION  
 OF THE BOARD OF ALDERMEN  
 SEPTEMBER 17, 1925

T.F.C. 2471-13  
 PROVIDENCE, R.I.  
 CITY ENGINEER'S OFFICE  
 STREET LINE DEPT.  
 April 18, 1929  
 051555

Witness, \_\_\_\_\_ City Clerk



OFFICE No. 29144  
 DRAWER 73  
 SHEET A-34