

Note: The area declared a public highway is indicated by the letters ABCDEFGA.

PLAT OF

ARDMORE AVENUE

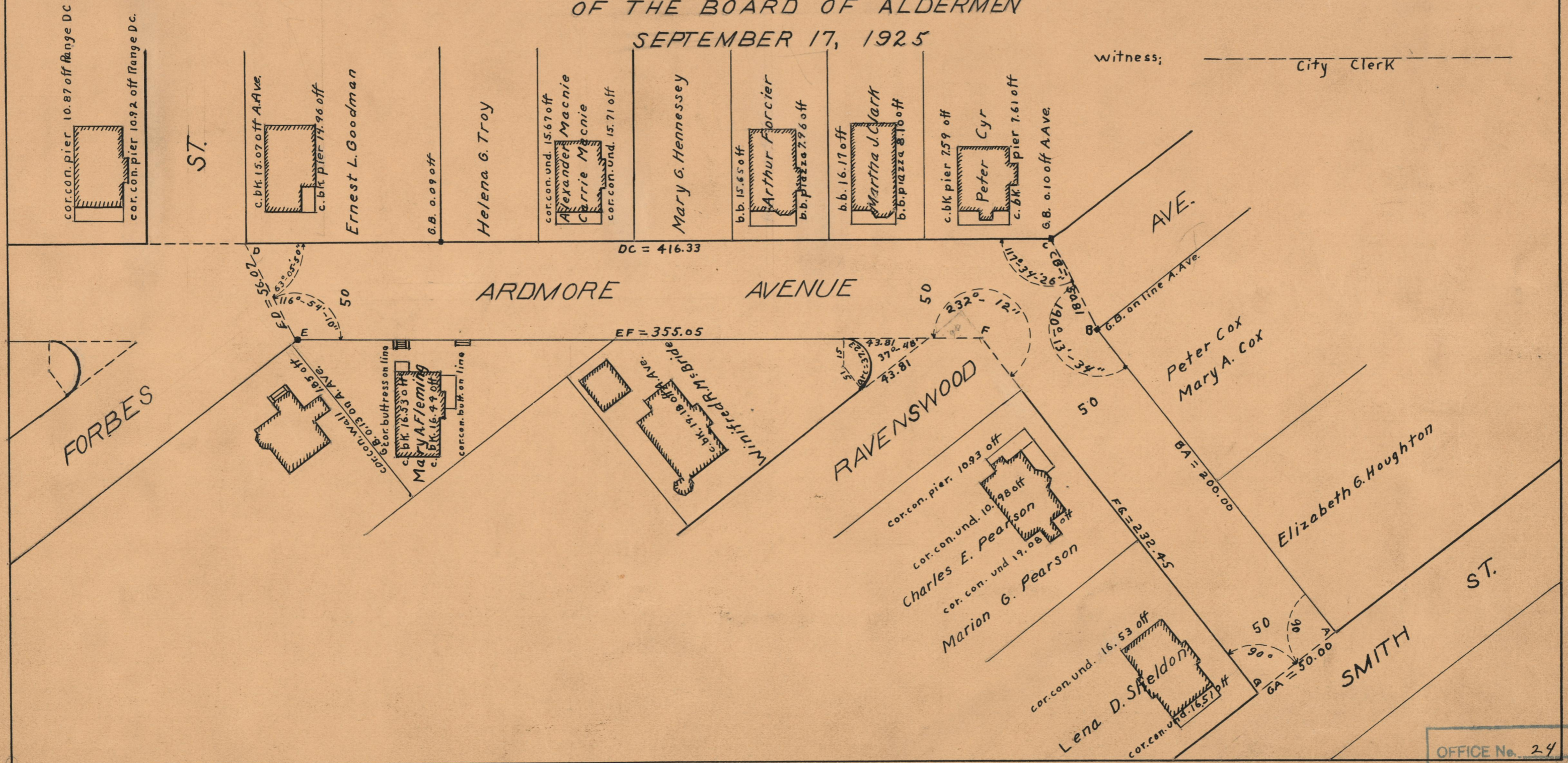
FROM SMITH ST TO FORBES ST

SCALE 50 FEET PER INCH

DECLARED A PUBLIC HIGHWAY BY RESOLUTION
OF THE BOARD OF ALDERMEN
SEPTEMBER 17, 1925

The lines thus fixed conform with the "Westerleigh Plat" recorded on Card 1040 in the office of the Recorder of Deeds.

witness; _____ City Clerk



OFFICE No.	24 143
DRAWER	73
SHEET	A-33