

Note: The area declared a public highway is indicated by the letters ABCDEFGHIJA

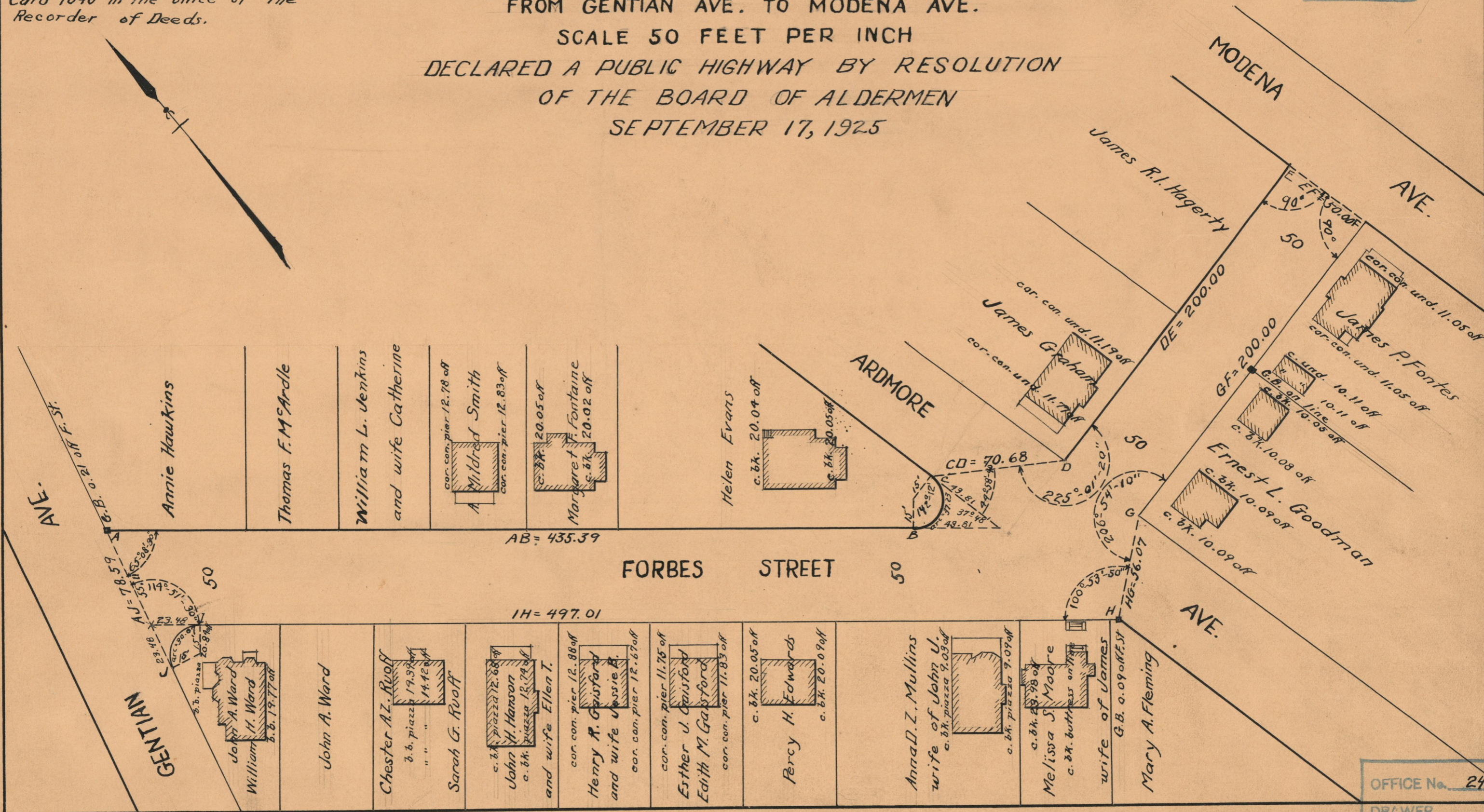
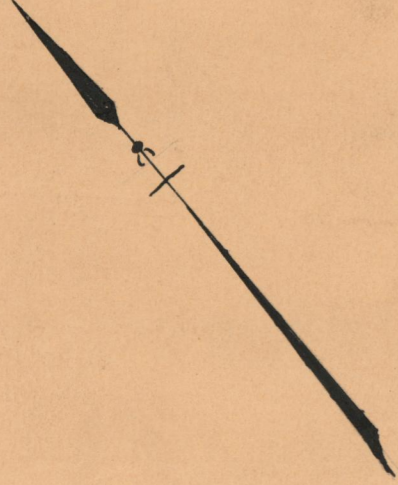
The lines thus fixed conform with "Westerleigh Plat" recored on Card 1040 in the office of the Recorder of Deeds.

# PLAT OF FORBES STREET

FROM GENTIAN AVE. TO MODENA AVE.

SCALE 50 FEET PER INCH

DECLARED A PUBLIC HIGHWAY BY RESOLUTION  
OF THE BOARD OF ALDERMEN  
SEPTEMBER 17, 1925



OFFICE No.	24142
DRAWER	73
SHEET	A-32