

See Sheet One for Note

# PLAT OF RAVENSWOOD AVENUE

FROM GENTIAN AVE. TO MODENA AVE.

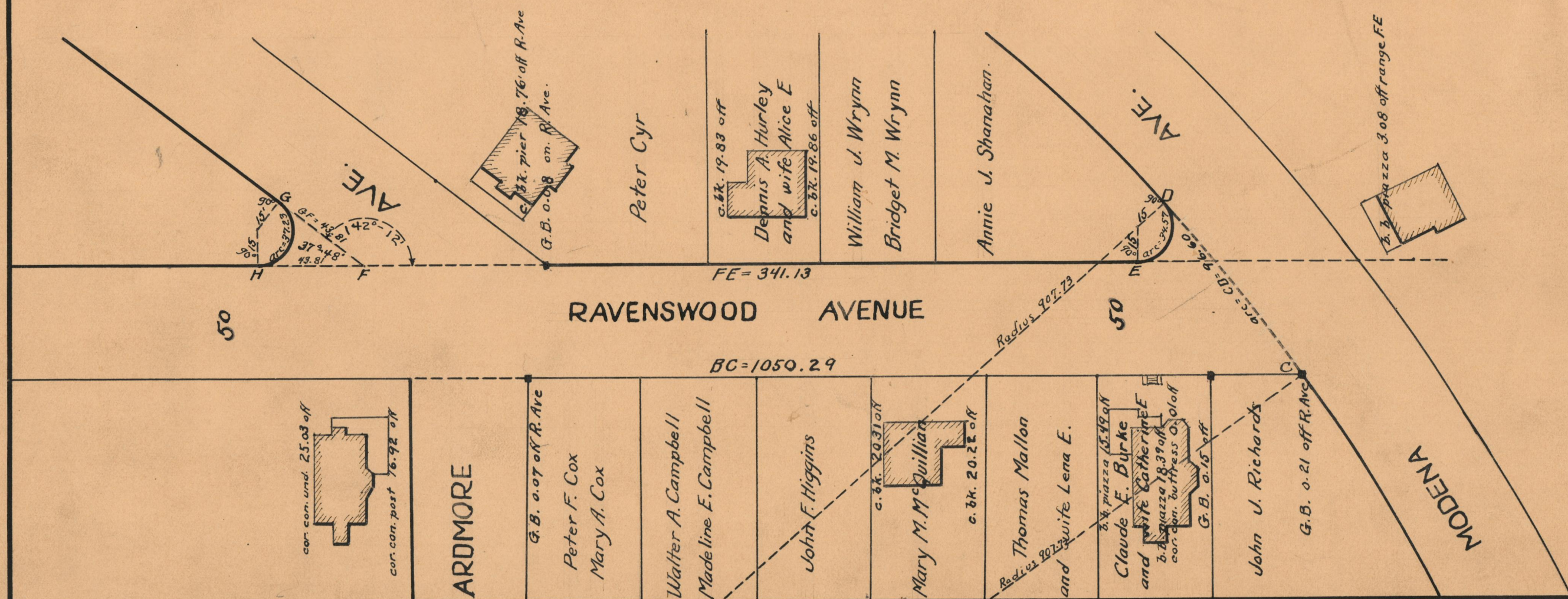
IN TWO SHEETS

SCALE 50 FEET PER INCH

DECLARED A PUBLIC HIGHWAY BY RESOLUTION  
OF THE BOARD OF ALDERMEN  
SEPTEMBER 17, 1925

PROVIDENCE, R.I.  
CITY ENGINEER'S OFFICE  
STREET LINE DEPT.  
April, 25, 1929

051575



OFFICE No.	24141
DRAWER	73
SHEET	A-31