

Note: The area declared a public highway is indicated by the letters ABCDEFGH IJA.

The lines thus fixed conform with the "Westerleigh Plat" recorded on Card 1040 in the office of the Recorder of Deeds.

PLAT OF RAVENSWOOD AVENUE

FROM GENTIAN AVE. TO MODENA AVE.

IN TWO SHEETS

SCALE 50 FEET PER INCH

DECLARED A PUBLIC HIGHWAY BY RESOLUTION
OF THE BOARD OF ALDERMEN

SEPTEMBER 17, 1925

CITY ENGINEER'S OFFICE

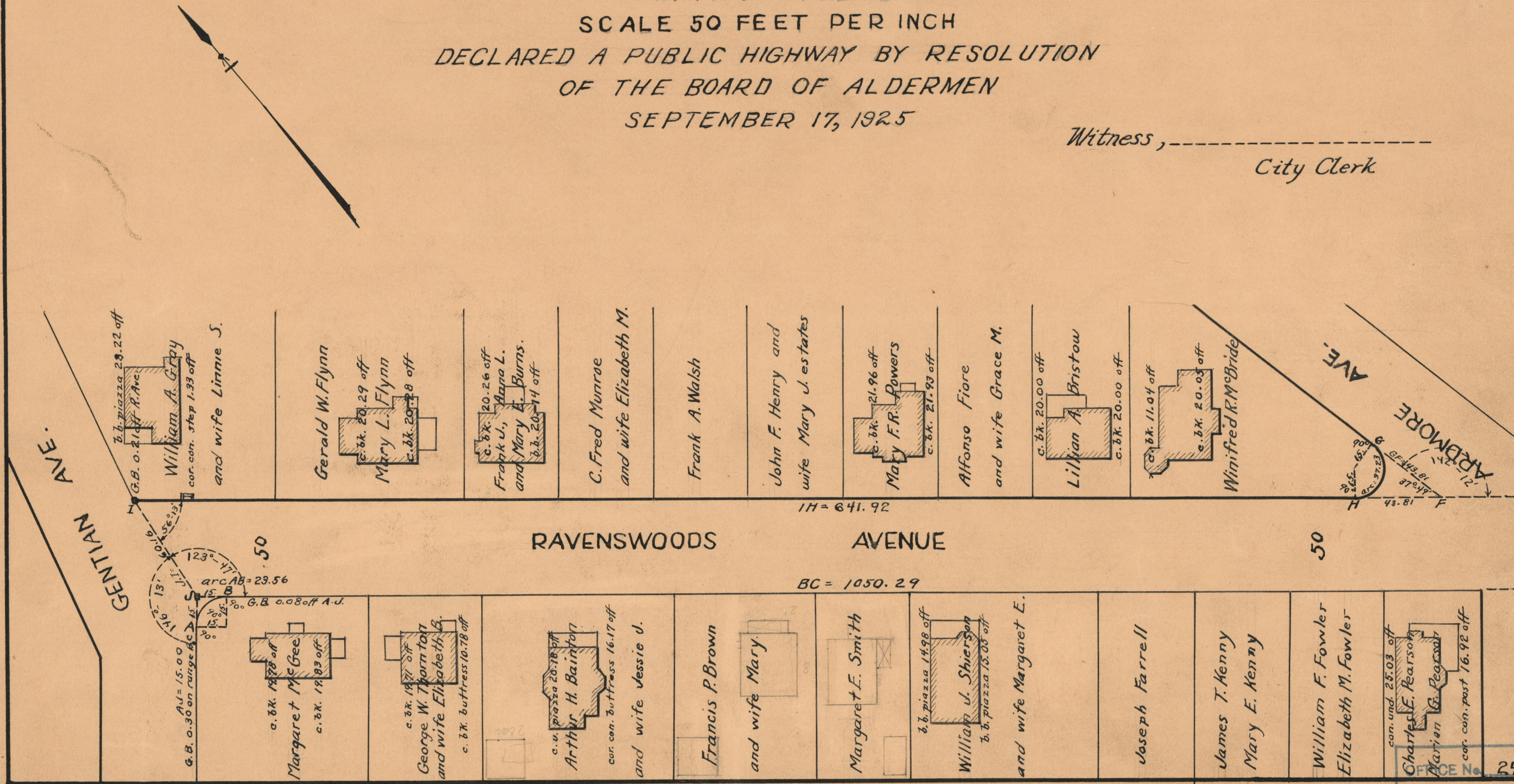
STREET LINE DEPT.

April 25, 1929

051574

Witness, -----

City Clerk



OFFICE No. 24140
 DRAWER " 73
 SHEET " A-30