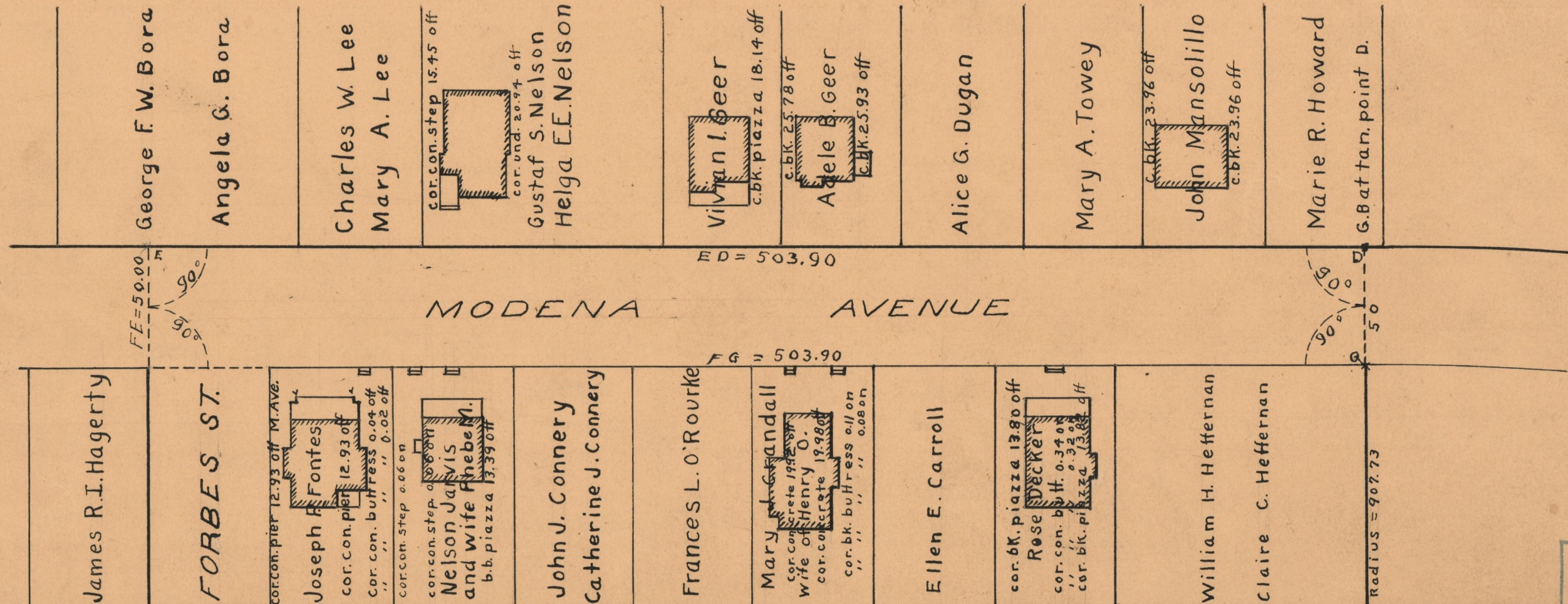


May 15, 1929

051798

PLAT OF
MODENA AVENUE
FROM SMITH ST. TO NORTHERLY LINE OF FORBES ST.
IN TWO SHEETS
SCALE 50 FEET PER INCH
DECLARED A PUBLIC HIGHWAY BY RESOLUTION
OF THE BOARD OF ALDERMEN
SEPTEMBER 17, 1925



OFFICE No.	24139
DRAWER	73
SHEET	A-29