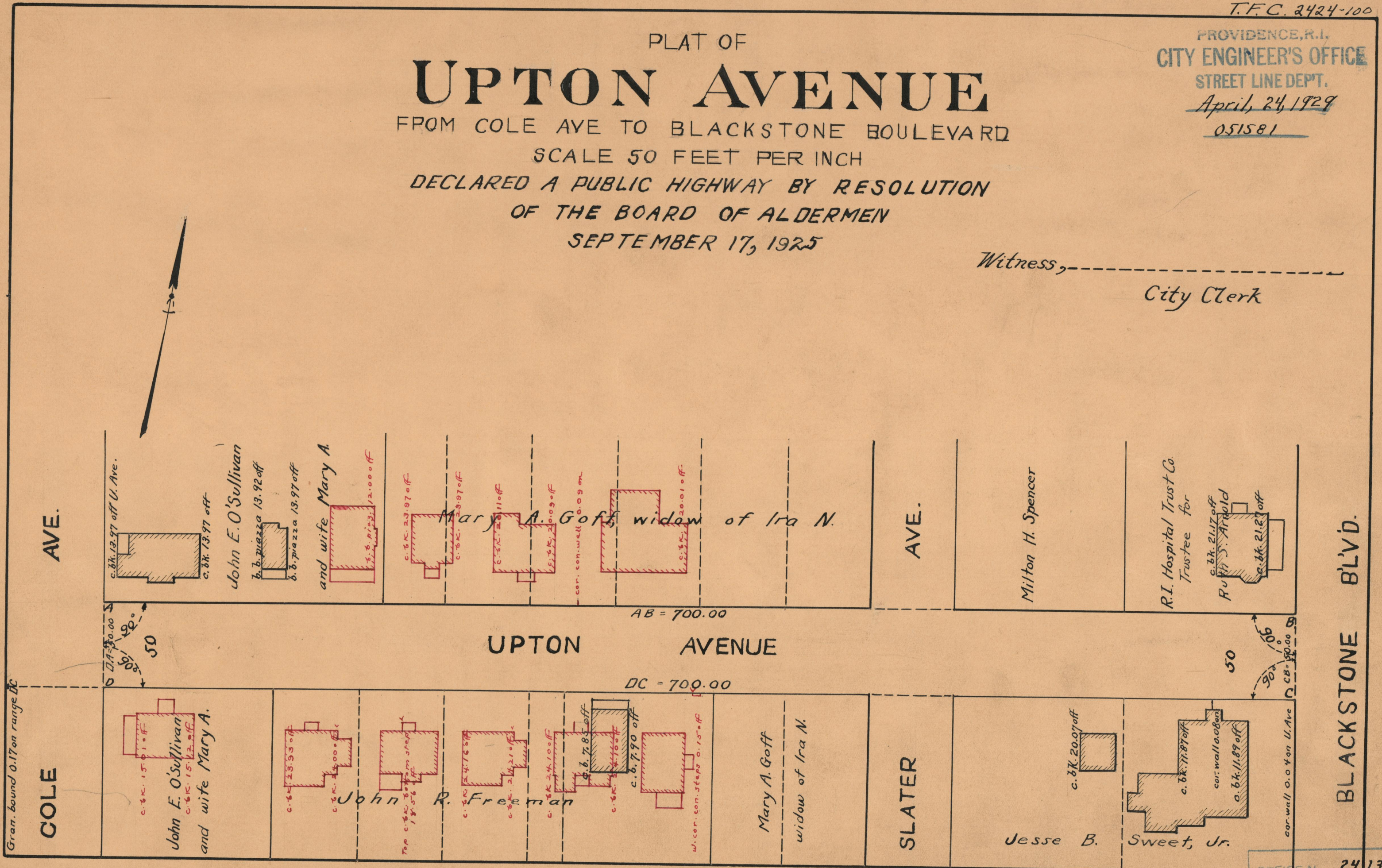


PROVIDENCE, R.I.
CITY ENGINEER'S OFFICE
STREET LINE DEPT.
April, 24, 1929
051581

PLAT OF
UPTON AVENUE
FROM COLE AVE TO BLACKSTONE BOULEVARD
SCALE 50 FEET PER INCH
DECLARED A PUBLIC HIGHWAY BY RESOLUTION
OF THE BOARD OF ALDERMEN
SEPTEMBER 17, 1925

Witness, _____
City Clerk



Gran. bound 0.17 on range DC

OFFICE No. 24137
DRAWER " 73
SHEET " A-27