

PROVIDENCE, R.I.  
CITY ENGINEER'S OFFICE  
STREET LINE DEPT.

April 25, 1929

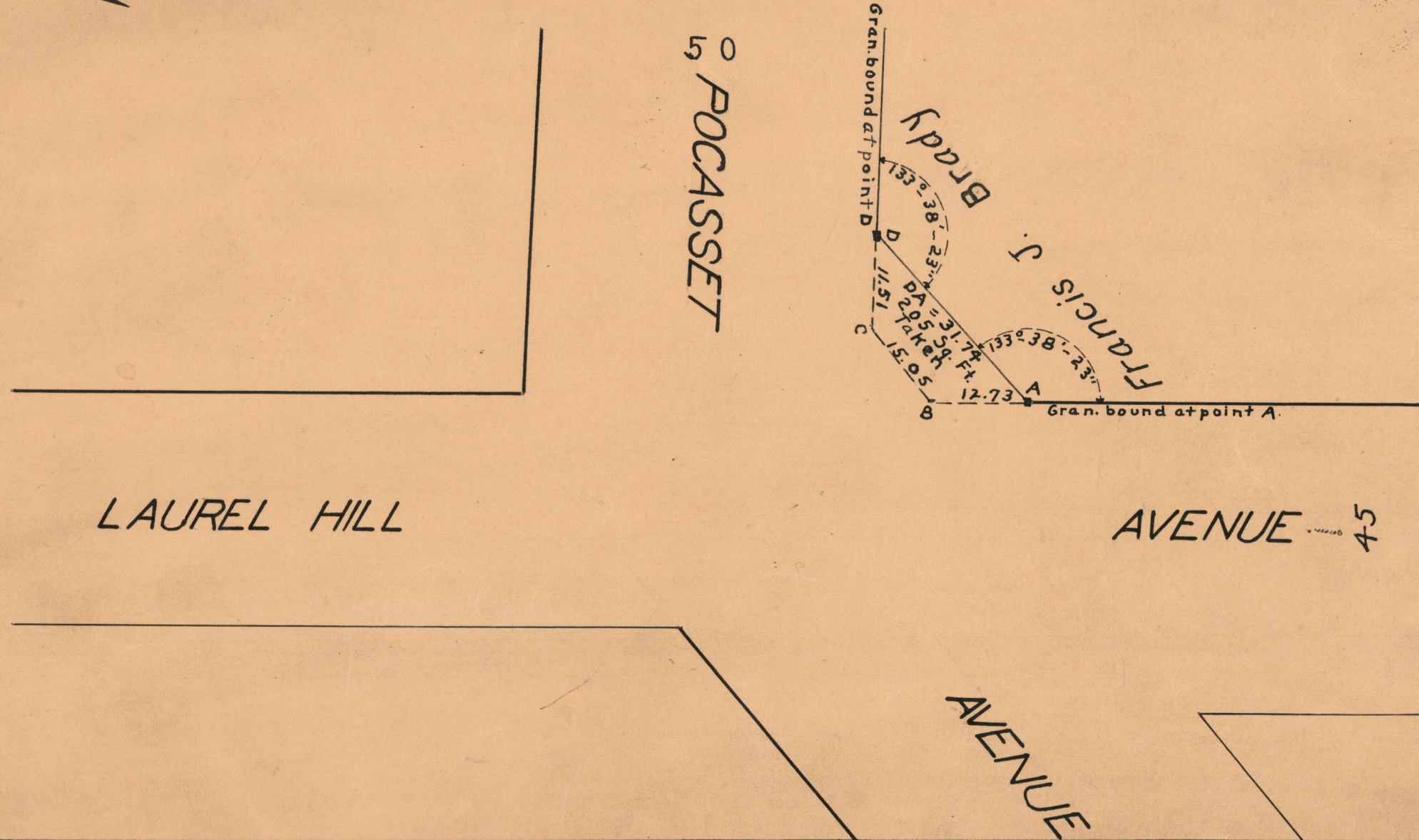
051584

Note: The area condemned for highway purposes is indicated by the letters ABCD.  
This plat agrees with the plat recorded in Plat Book 37 page 36 in office of the Recorder of Deeds.

PLAT OF  
LAND AT THE CORNER OF  
**POCASSET AVENUE**  
AND  
**LAUREL HILL AVENUE**

SCALE 20 FEET PER INCH

*Condemned for highway purposes by Resolution of the  
City Council  
June 18, 1925*



OFFICE No. 24 110  
DRAWER # 73  
SHEET # A-26