

Note: The area condemned for highway purposes is indicated by the letters ABC.

This plat agrees with the plat recorded in Plat Book 37 page 36 in the office of the Recorder of Deeds.

T.F.C. 2424-70.

PROVIDENCE, R.I.
CITY ENGINEER'S OFFICE
STREET LINE DEPT.

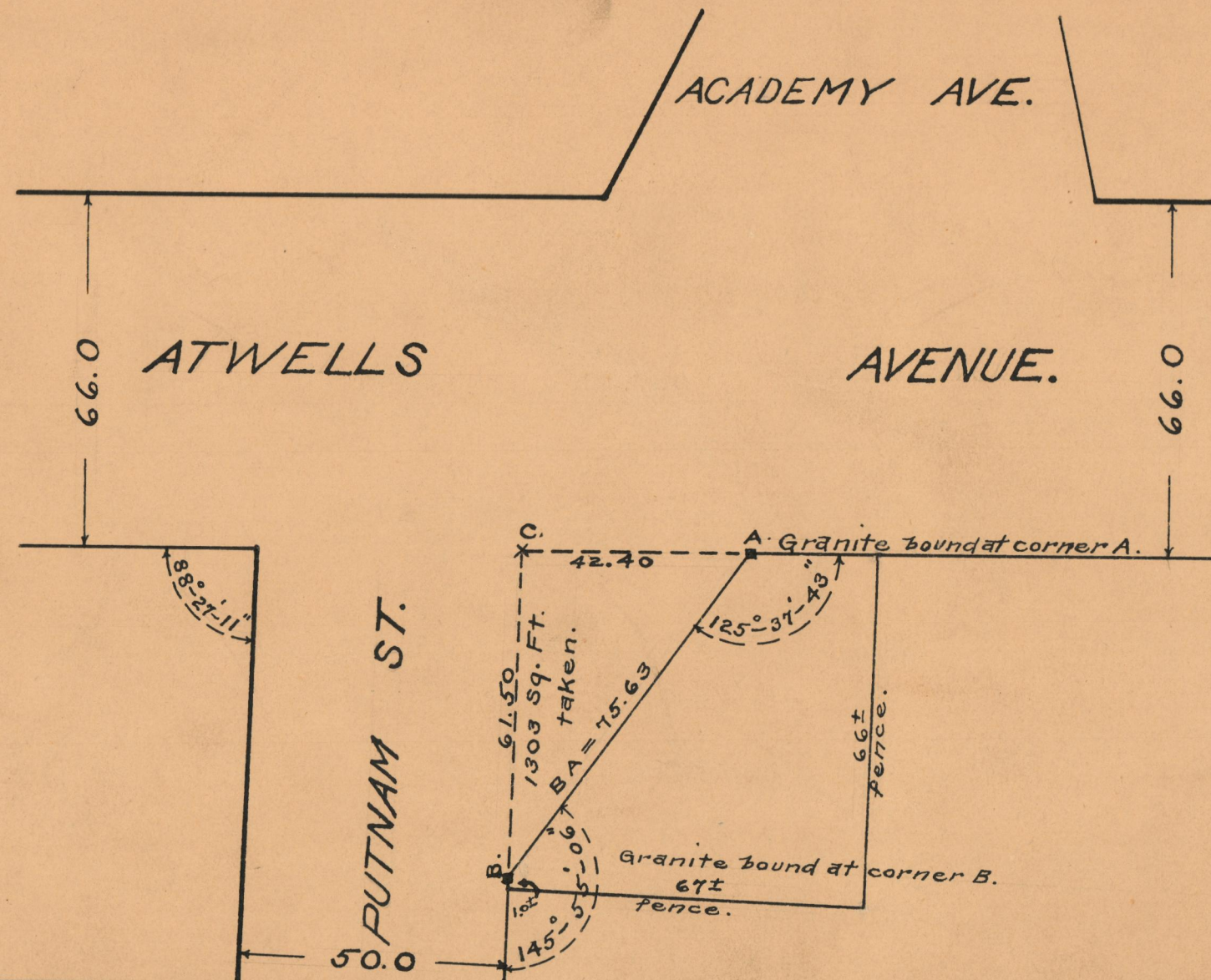
April 25, 1929.

051603.

PLAT OF
LAND AT THE CORNER OF
PUTNAM STREET
AND
ATWELLS AVENUE

SCALE 30 FEET PER INCH

Condemned for highway purposes by Resolution of the
City Council
June 18, 1925.



OFFICE No. 24109

DRAWN " 73

SHEET " A-25