

PROVIDENCE, R.I.
CITY ENGINEER'S OFFICE
STREET LINE DEPT.

May 9, 1929

051752

Note: The area declared a public highway is indicated by letters ABCD.
The lines thus fixed conform with the deeds recorded in Deed Book 662 page 411 and Deed Book 673 pages 100 to 105 inclusive in the office of the Recorder of Deeds

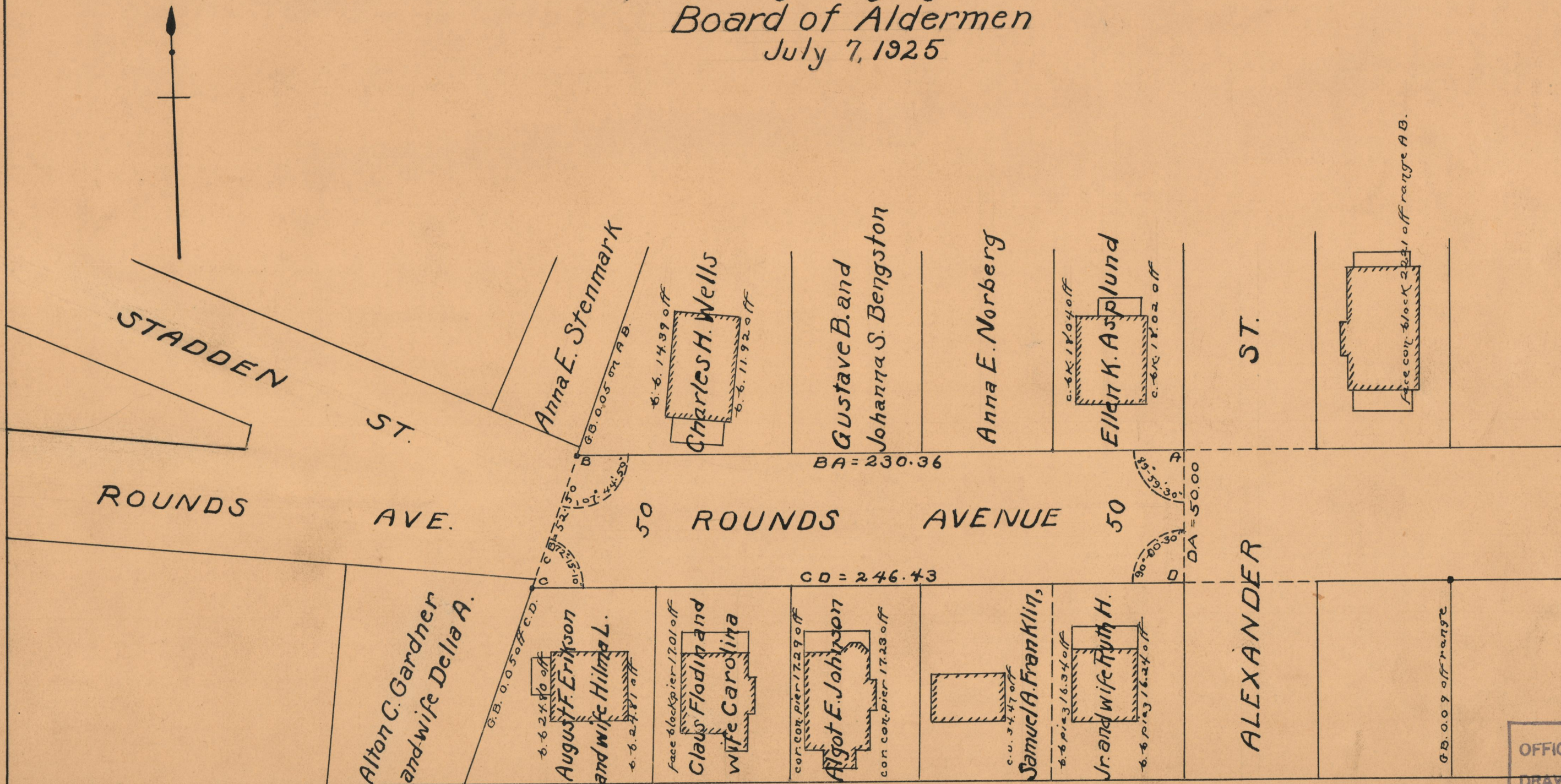
PLAT OF

ROUNDS AVENUE

FROM ALEXANDER ST. WESTERLY TO PORTION ALREADY RECEIVED

SCALE 40 FEET PER INCH

Declared a public highway by Resolution of the Board of Aldermen
July 7, 1925



OFFICE No.	24107
DRAWER	73
SHEET	A-24