

PROVIDENCE, R.I.
CITY ENGINEER'S OFFICE
STREET LINE DEPT.

Aug. 2, 1929

052032

PLAT OF

SACKETT STREET

FROM MELROSE ST. TO EMERSON ST.

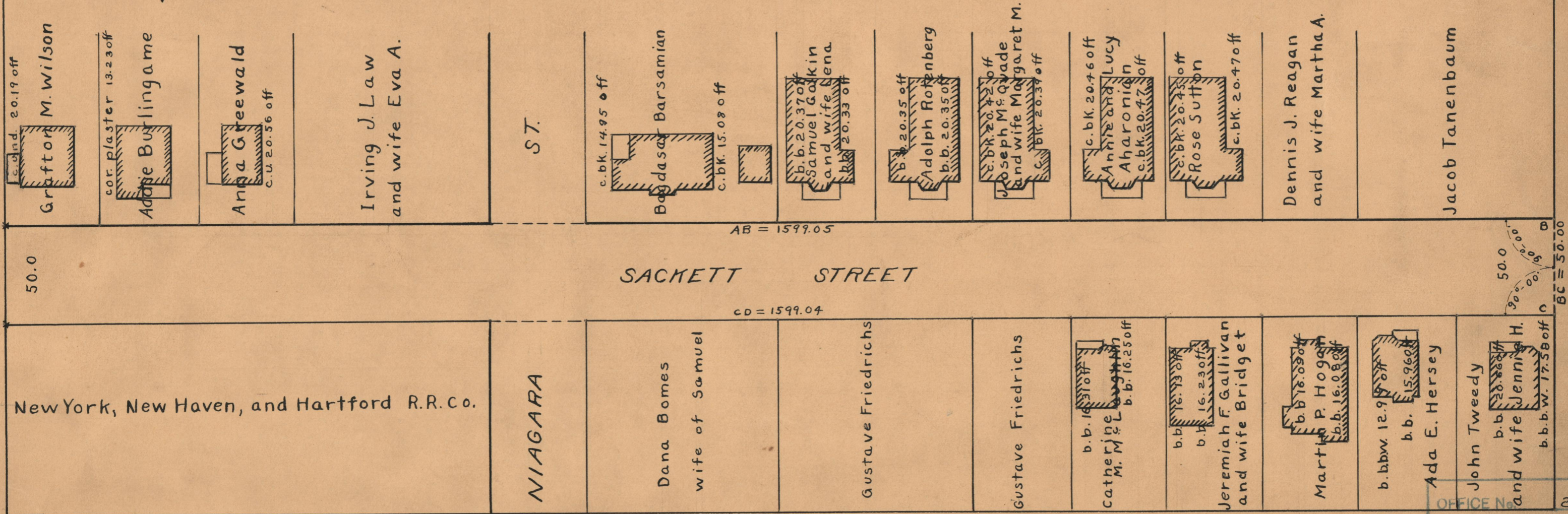
SCALE 50 FEET PER INCH

DECLARED A PUBLIC HIGHWAY

BY RESOLUTION OF THE

BOARD OF ALDERMEN

JANUARY 21, 1926



OFFICE No. 24049
DRAWER 73
SHEET A-22