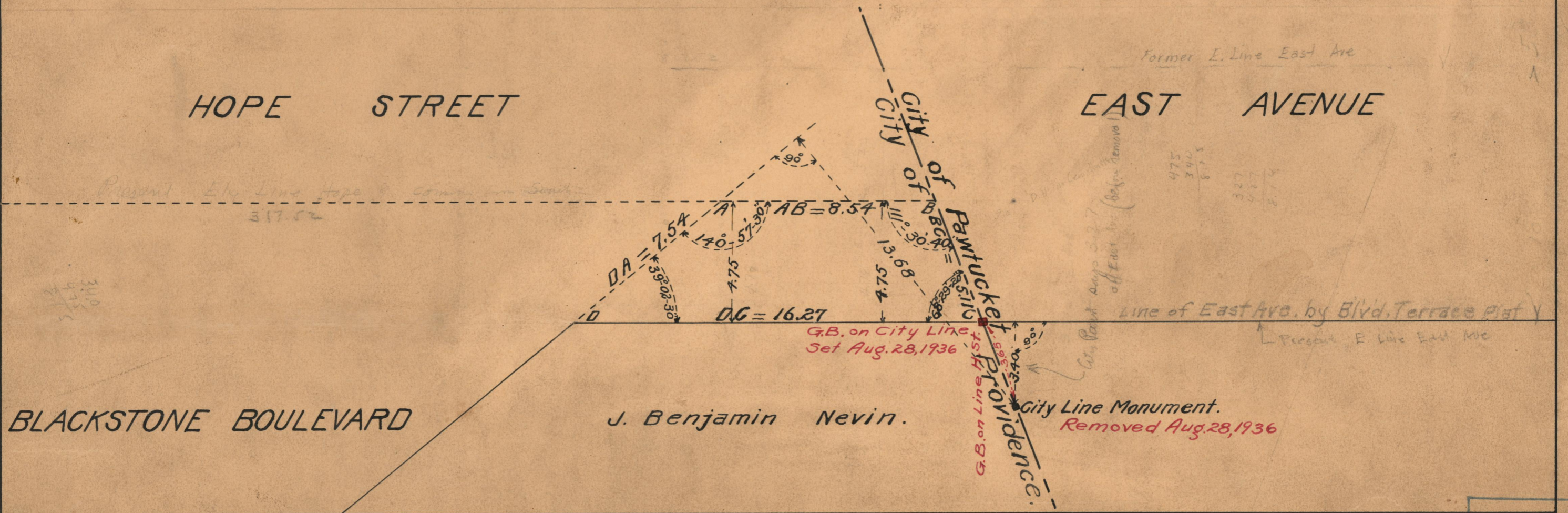
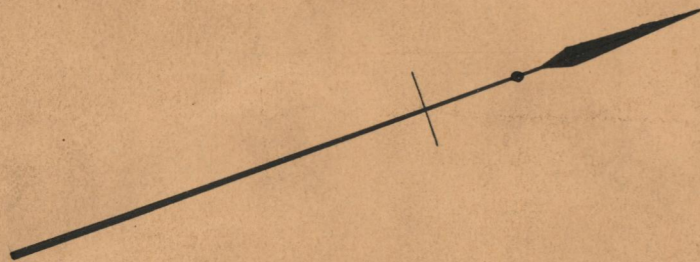


PROVIDENCE, R.I.
CITY ENGINEER'S OFFICE
STREET LINE DEPT.
Dec. 31, 1925.

048307

Note: The area declared a public highway is indicated by the letters ABCD and conforms to the "Boulevard Terrace" Plat which is recorded in Plat Book 35 page 76 in the office of the Recorder of Deeds.

PLAT OF
HOPE STREET
FROM BLACKSTONE BOULEVARD TO THE CITY LINE
SCALE 4 FEET PER INCH
DECLARED A PUBLIC HIGHWAY BY RESOLUTION
OF THE BOARD OF ALDERMEN
MAY 7, 1925



J. Benjamin Nevin.

73
A-20

73
A-20

OFFICE No.	27047
DRAWER	73
SHEET	A-20