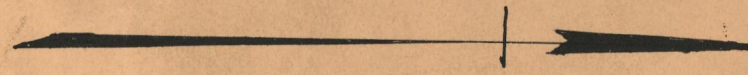


Note: The areas declared public highways are indicated by the letters ABC and DEF and conform with the deeds recorded in Deed Book 574 Page 31 and Deed Book 576 page 476 in the office of the Recorder of Deeds

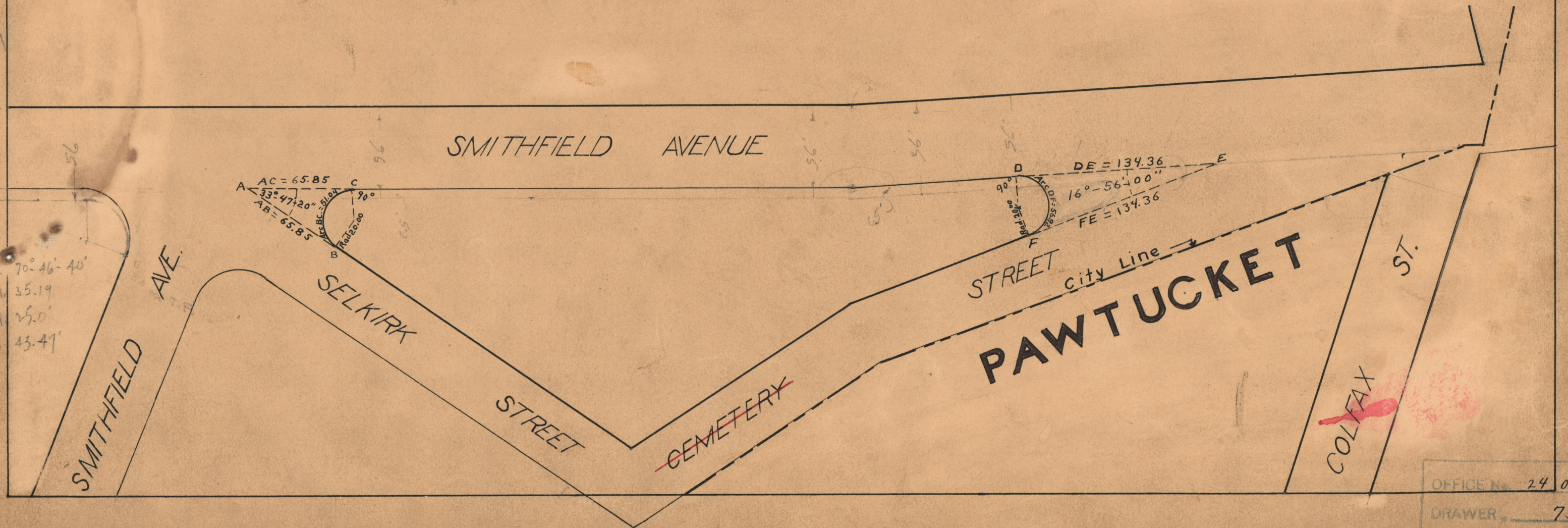
PROVIDENCE, R.I.
CITY ENGINEER'S OFFICE
STREET LINE DEPT.
Apr. 29, 1929
051673

PLAT OF
SMITHFIELD AVENUE
AT THE JUNCTIONS OF
SELKIRK AND CEMETERY STREETS

SCALE 60 FEET PER INCH
DECLARED A PUBLIC HIGHWAY BY RESOLUTION
OF THE BOARD OF ALDERMEN
FEBRUARY 5, 1925



Cemetery St. changed to Selkirk St. Feb. 5, 1926
1925



70°-46'-40"
Tan 35.19
Rad 25.0'
Arc 43.41'

OFFICE No. 24 046
DRAWER 73
SHEET 5 A-19