

Note. the area declared a public highway is indicated by the letters ABCDEF.

The lines thus fixed conform with the plat recorded in Plat Book 37, page 36, also with deeds recorded in Deed Book 487, page 317, and Deed Book 448, page 140, in the office of the Recorder of Deeds.

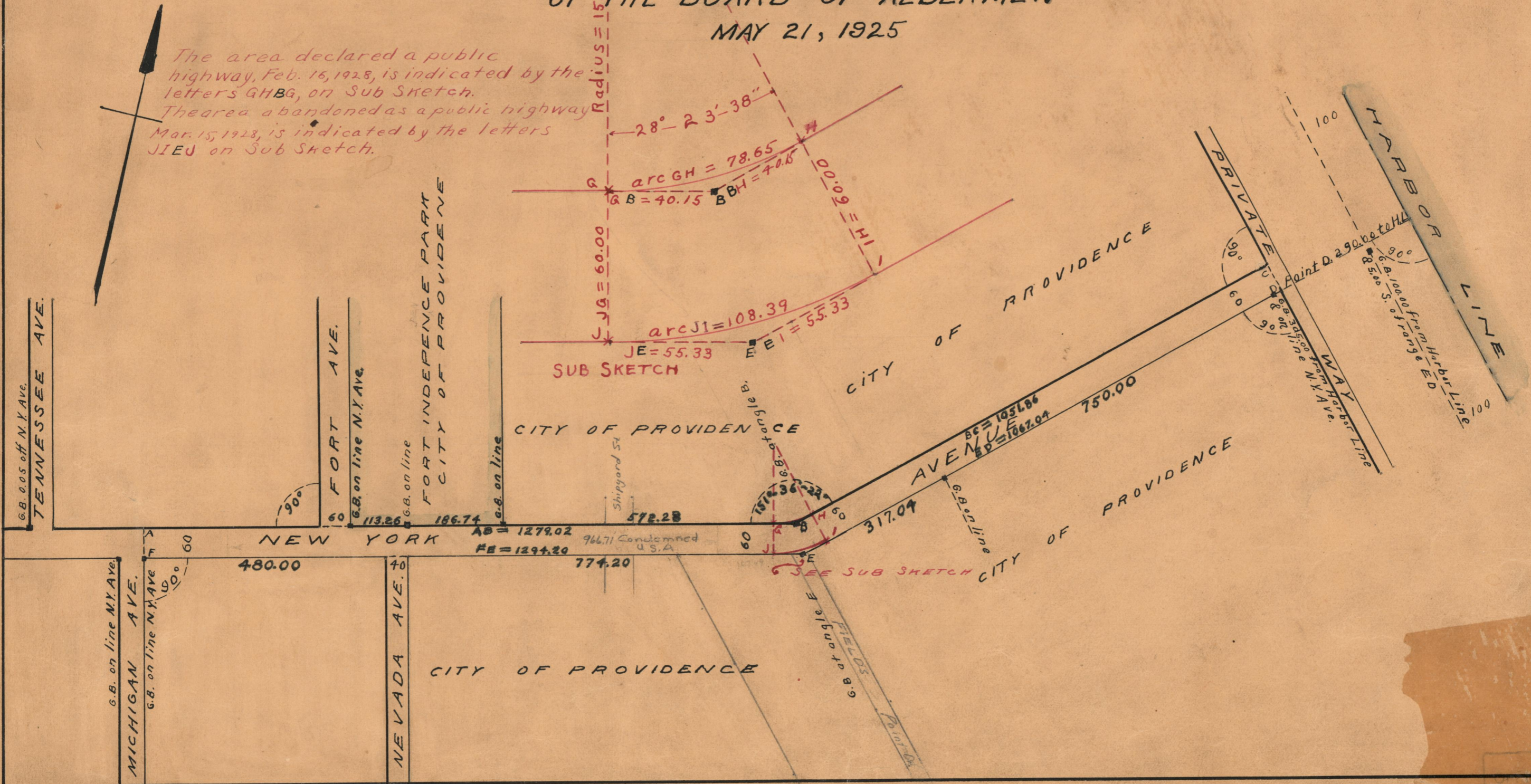
PLAT OF NEW YORK AVENUE

FROM MICHIGAN AVE. EASTERLY
SCALE 200 FEET PER INCH

DECLARED A PUBLIC HIGHWAY BY RESOLUTION
OF THE BOARD OF ALDERMEN
MAY 21, 1925

PROVIDENCE, R.I.
CITY ENGINEER'S OFFICE
STREET LINE DEPT.
Aug. 16, 1929
052073

The area declared a public highway, Feb. 16, 1928, is indicated by the letters GHBA, on Sub Sketch.
The area abandoned as a public highway Mar. 15, 1928, is indicated by the letters JIED on Sub Sketch.



24034
DRAWER 73
SHEET A-18