

PROVIDENCE, R.I.  
CITY ENGINEER'S OFFICE  
STREET LINE DEPT.

August 5, 1929

052042

PLAT OF

# SAWYER STREET

FROM ELMWOOD AVE. TO STAMFORD AVE.

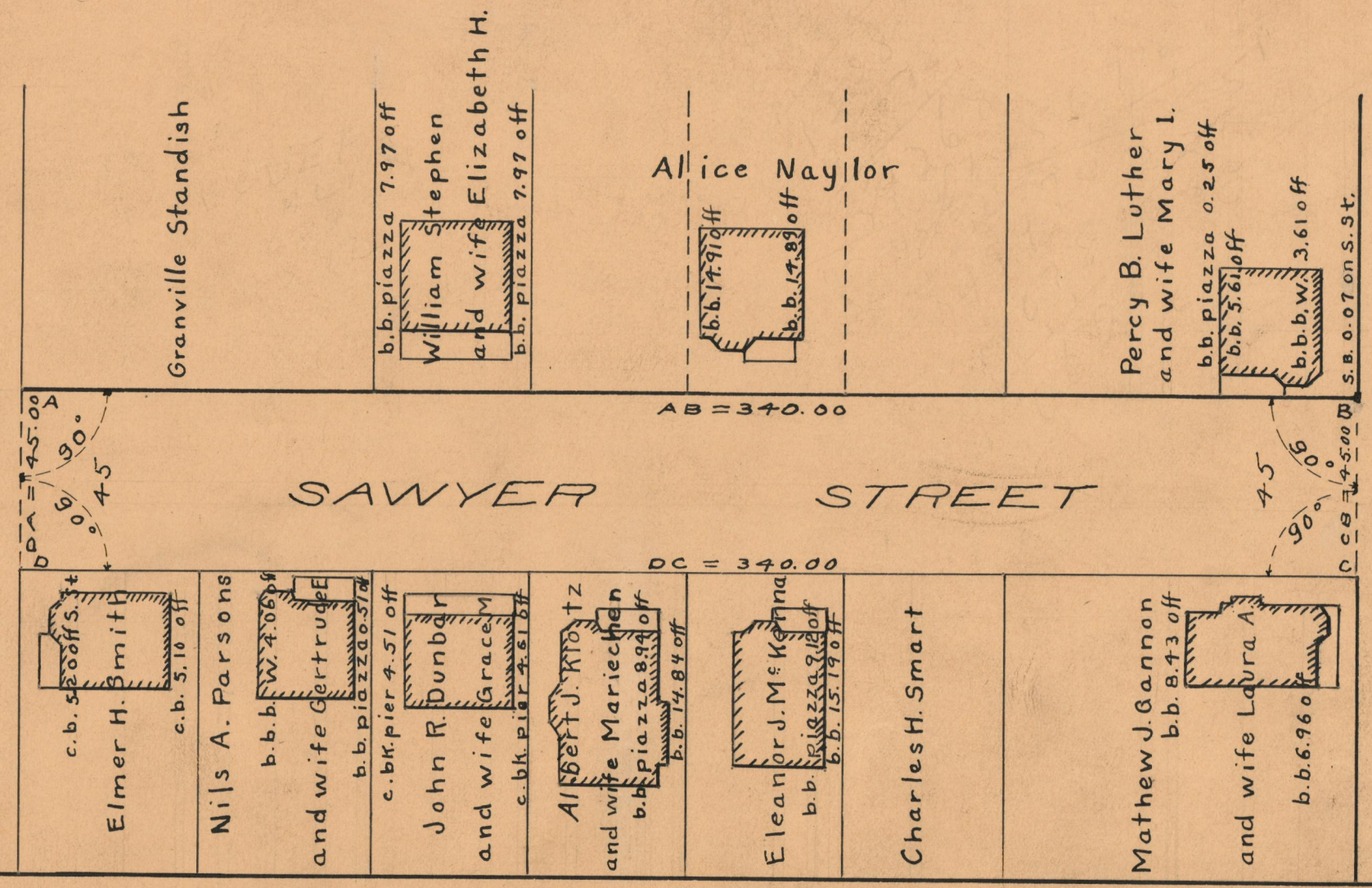
SCALE 40 FEET PER INCH

DECLARED A PUBLIC HIGHWAY BY RESOLUTION  
OF THE BOARD OF ALDERMEN  
DECEMBER 17, 1925



ELMWOOD AVE.

STAMFORD AVE.



OFFICE No.	24027
DRAWER	73
SHEET	A-17