

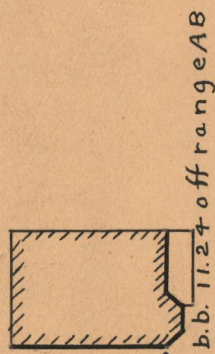
PROVIDENCE, R.I.
CITY ENGINEER'S OFFICE
STREET LINE DEPT.
August 7, 1929
052045

PLAT OF SPOONER STREET

FROM ELMWOOD AVE. TO STAMFORD AVE.

SCALE 40 FEET PER INCH

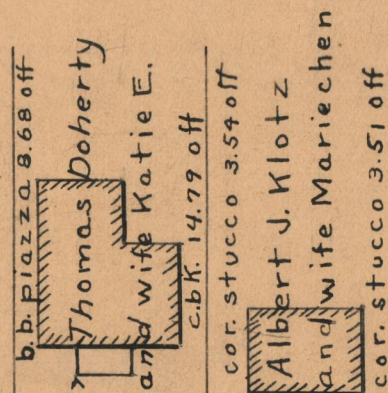
DECLARED A PUBLIC HIGHWAY BY RESOLUTION
OF THE BOARD OF ALDERMEN
DECEMBER 17, 1925



ELMWOOD AVE.

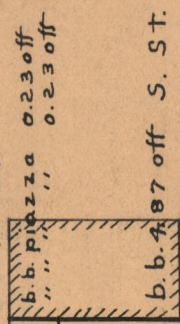
Horatio D. LaFauci

James J. Doherty



Charles E. Hart

Thomas Sullivan and wife Hannah

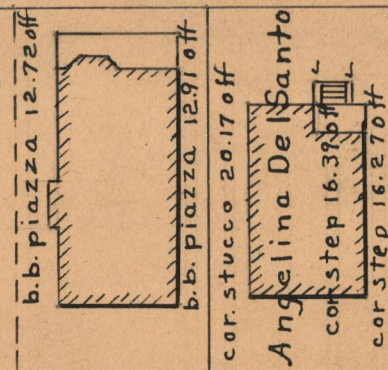


STAMFORD AVE.

ELMWOOD

Henry J. Sullivan

John R. Kennedy

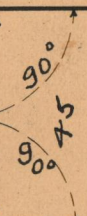


Mary A. Murphy Heirs

Thomas E. Dwyer



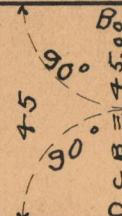
DA = 145.00



SPOONER STREET

AB = 340.00

DC = 340.00



DCB = 145.00

OFFICE No. 24026
DRAWER " 73
SHEET " A-16