

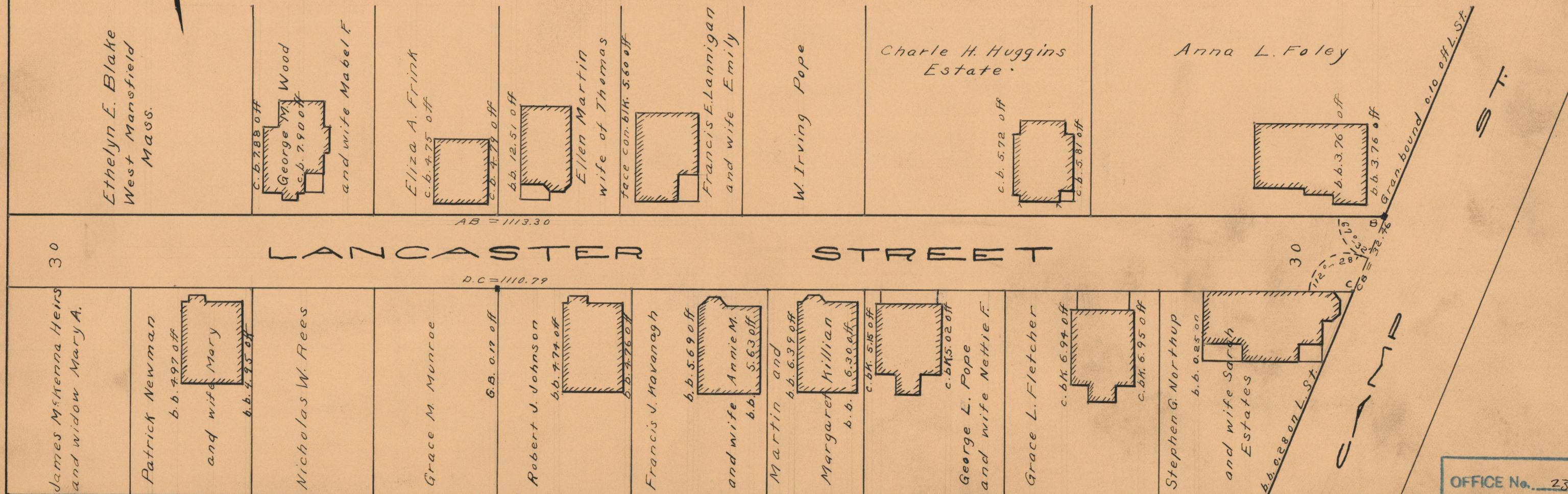
August 19, 1929

052091

PLAT OF
LANCASTER STREET

FROM NORTH MAIN ST. TO CAMP ST.
IN TWO SHEETS
SCALE 40 FEET PER INCH

DECLARED AND ESTABLISHED A PUBLIC HIGHWAY BY RESOLUTION
OF THE BOARD OF ALDERMEN
MAY 20, 1926



OFFICE No.	23 196
DRAWER	73
SHEET	A-12