

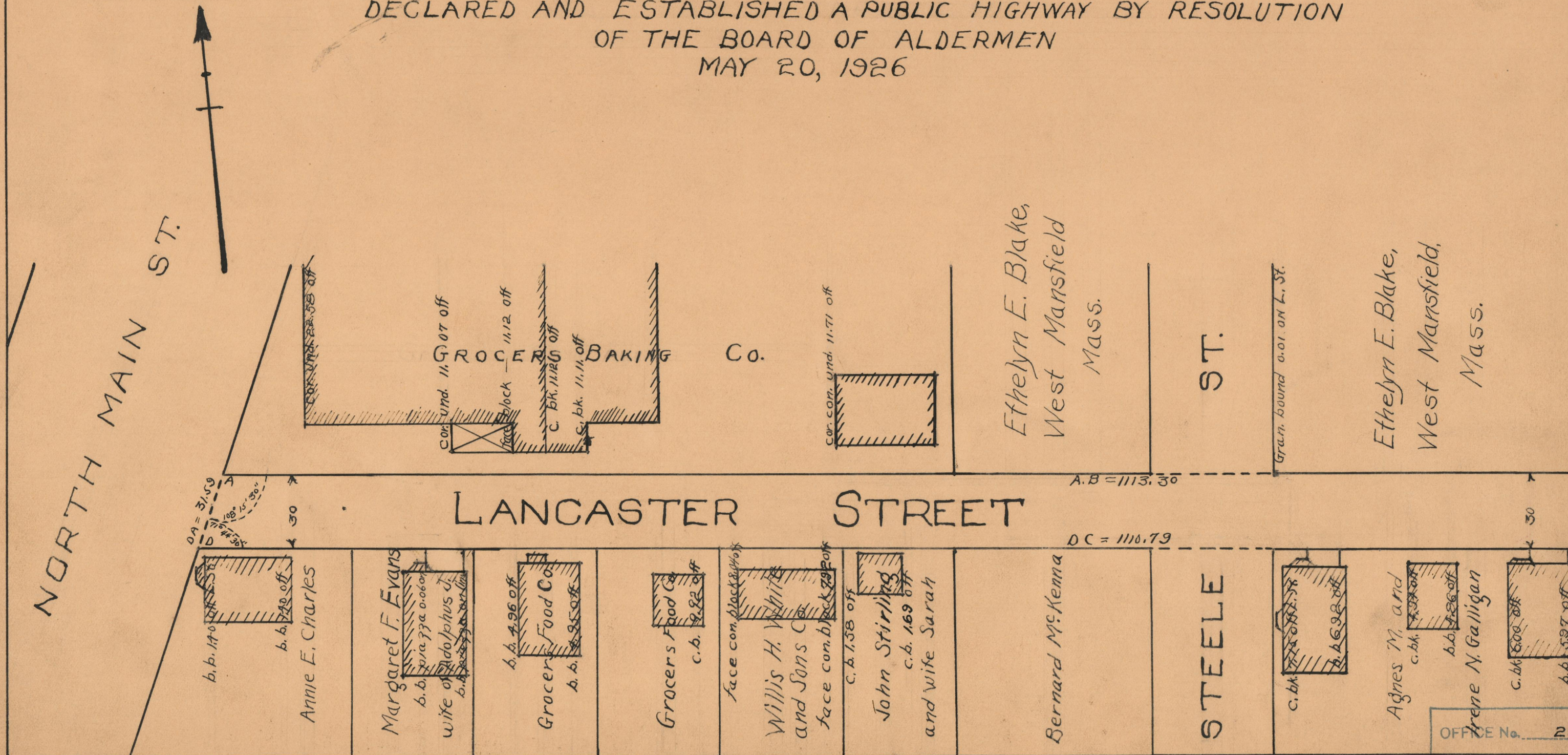
Oct. 22, 1929

052208

PLAT OF LANCASTER STREET

FROM NORTH MAIN ST. TO CAMP ST.
IN TWO SHEETS

SCALE - 40 FEET PER INCH
DECLARED AND ESTABLISHED A PUBLIC HIGHWAY BY RESOLUTION
OF THE BOARD OF ALDERMEN
MAY 20, 1926



OFFICE No.	23195
DRAWER	73
SHEET	A-11