

Note: The area taken is denoted by the letters ABCD as shown on plat recorded in Plat Book 37 on page 36 in the office of the Recorder of Deeds.

PROVIDENCE, R.I.  
CITY ENGINEER'S OFFICE  
STREET LINE DEPT.

Jan. 21, 1930

052451

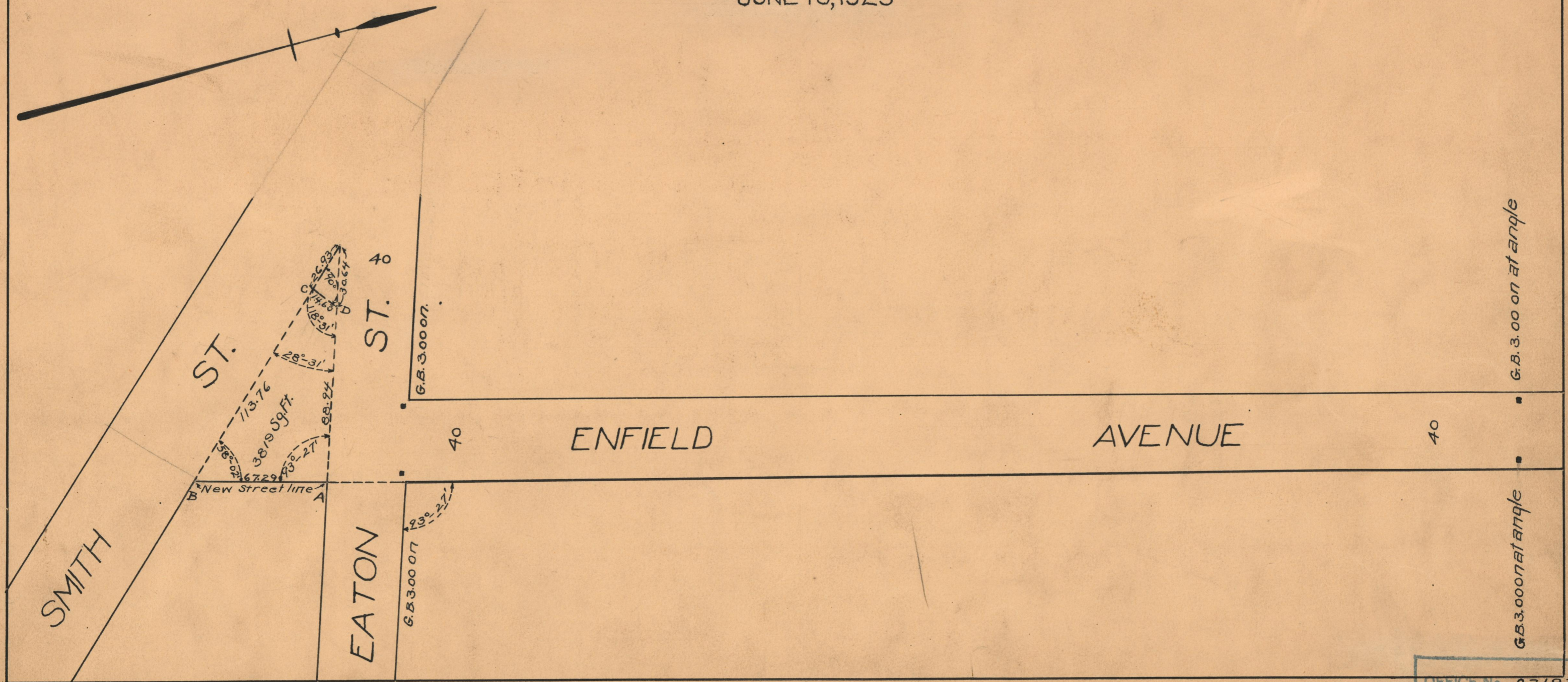
PLAT OF  
**ENFIELD AVENUE**

FROM EATON ST. TO SMITH ST.

SCALE 50 FEET PER INCH

TAKEN FOR HIGHWAY PURPOSES BY  
RESOLUTION OF THE CITY COUNCIL

JUNE 18, 1925



G.B. 3.00 on at angle

G.B. 3.00 on at angle

OFFICE No. 23193  
DRAWER " 73  
SHEET " A-9