

See Note on sheet one

PROVIDENCE, R.I.
CITY ENGINEER'S OFFICE
STREET LINE DEPT.

Oct. 25, 1929

052215

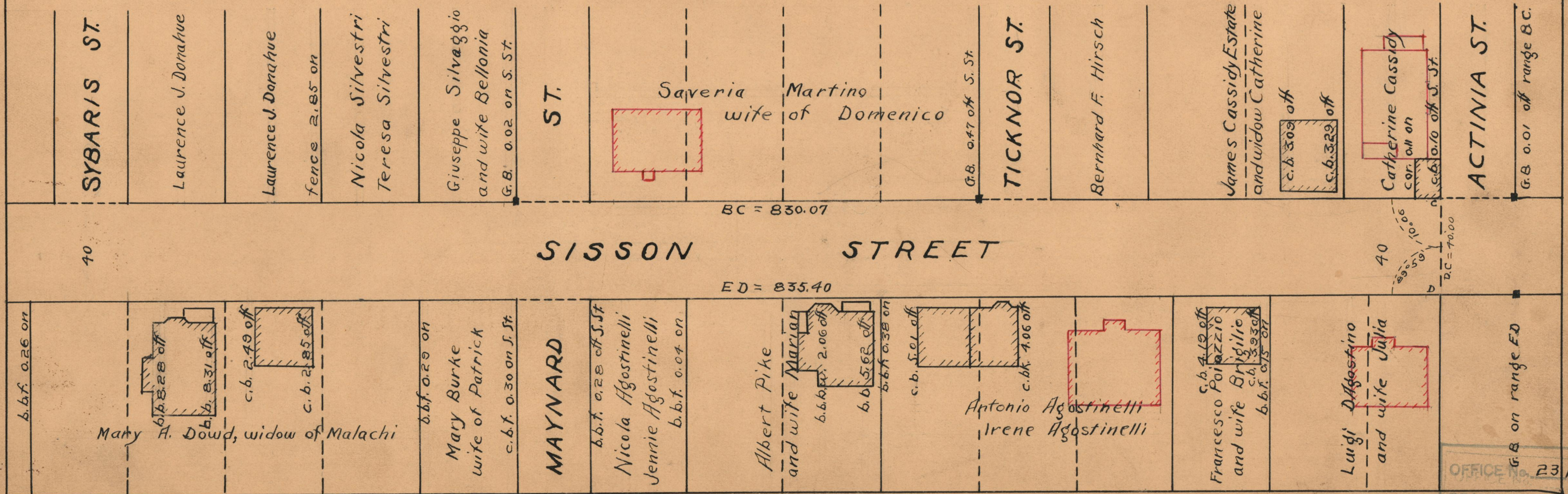
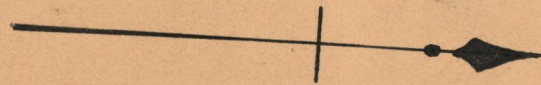
PLAT OF SISSON STREET

FROM MANTON AVE. TO ACTINIA ST.

IN TWO SHEETS

SCALE 40 FEET PER INCH

Declared and Established a public highway
by Resolution of the Board of Aldermen
December 18, 1925



OFFICE No. 23/92
DRAWER 73
SHEET A-8